

## UNSAFE AND SAFE PRACTICES

Slips, trips, and falls (STF) were the leading cause of major workplace injuries in the first half of this year. Between 15 August and 17 October, the Ministry of Manpower conducted over 750 inspections for STF hazards across the Construction, Manufacturing, Transportation & Storage, Accommodation, and Food Services sectors. A total of 1,828 enforcement actions were taken against 558 companies – including 12 Stop Work Orders and 232 composition fines amounting to \$499,150.

Safety is everyone's responsibility; employers and workers should do their part in ensuring good practices are adopted to keep workplaces safe. Here are some examples of safe practices to adopt.

See MOM's post at

<https://www.facebook.com/sgministryofmanpower/posts/pfbid02P2utQK5ARX86Yn7EKFNwCrrNKWwavP3me7EhxyBivMKuTL2YuvtfGcDaUAyhdUUWI>

### Unsafe



- ✗ Overlapping steel plates
- ✗ Obstructions due to poor housekeeping
- ✗ Tripping hazard

### Safe



- ✓ Single layer of steel plates
- ✓ Good workplace housekeeping
- ✓ Low risk of tripping

## Unsafe



- × Obstructed passageway
- × Poor housekeeping
- × Slip, trip and fall hazard

## Safe



- ✓ Clear passageway
- ✓ Good workplace housekeeping
- ✓ Low risk of slipping or tripping

## Unsafe



- × Obstructions from materials stored along passageway
- × Protruding rebars
- × No warning signs
- × Tripping hazard

## Safe



- ✓ Unobstructed passageway
- ✓ Demarcated storage areas
- ✓ Low risk of tripping

## Unsafe



- × Missing and chipped floor tiles
- × Wet floor
- × Dented floor trap
- × Slip, trip and fall hazard

## Safe



- ✓ Anti-slip tiles
- ✓ Well-maintained and dry floor
- ✓ Good drainage system
- ✓ Low risk of slipping or tripping

## Unsafe



- × Obstructions along cold room aisle
- × Poor housekeeping
- × Slip, trip and fall hazard

## Safe



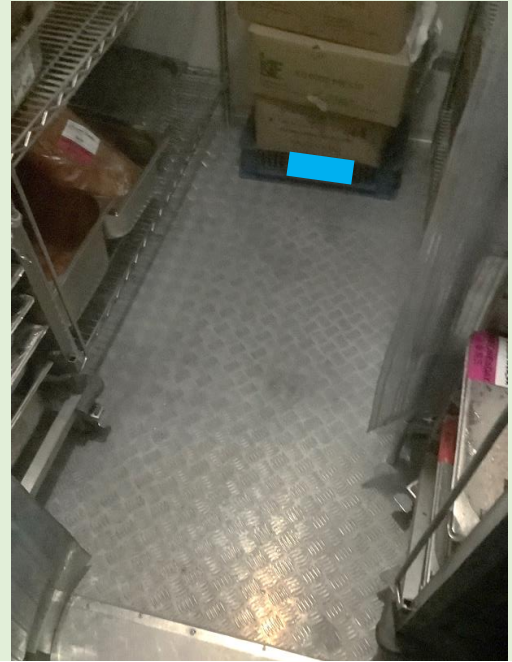
- ✓ Clear cold room aisle for safe access and fast evacuation
- ✓ Organised storage
- ✓ Low risk of slipping or tripping

## Unsafe



- × Cold room floor covered with layer of ice
- × Slipping hazard

## Safe



- ✓ Cold room floor kept dry and free from ice
- ✓ Low risk of slipping

## Unsafe



- × Leaking water pipe
- × Water puddles on the floor
- × Slipping hazard

## Safe



- ✓ Water pipes regularly inspected for leaks
- ✓ Floor kept dry
- ✓ Low risk of slipping