

27
March
2023

WSH BULLETIN

SPOTLIGHT



SAFE HANDLING OF FLAMMABLE MATERIALS

There were two separate incidents involving flammable materials in the first two weeks of March 2023.

On 7 March, an explosion in a room caused a section of the building wall to collapse. Preliminary investigations revealed the explosion was caused by the accumulation of flammable vapours from a waste oil tank placed in a lift motor room.

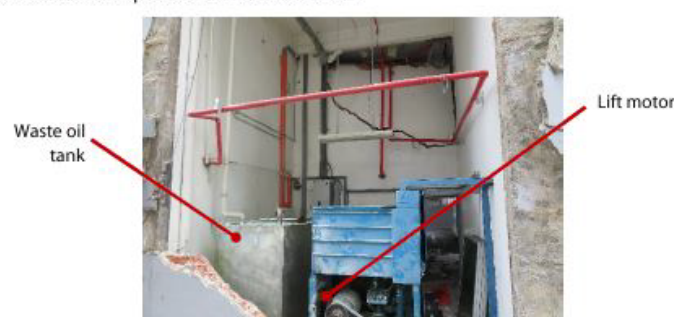


Figure 1: Lift motor room where waste oil was stored.

On 13 March, a large fire occurred at an industrial chemical blending and storage warehouse. Preliminary investigations revealed the fire started from an adhesive dispensing unit containing flammable solvents. The fire eventually engulfed the warehouse and its connecting production areas.

Safe Handling of Flammable Materials

Two separate incidents involving flammable materials occurred in the first two weeks of March 2023. Companies storing or handling flammable materials should ensure measures are in place to prevent workplace fires.

[Read More](#) →

Unsafe and Safe Practices: Safety Lapses in the Logistics Industry

Companies in the logistics industry were found to have safety lapses during MOM's inspections. Learn what are the safe practices to adopt.

[Read More](#) →

Apply Now for WSH Awards 2023

The WSH Innovation Awards recognises the best of WSH innovations across various industries. Companies who have improved their work processes to reduce safety and health risks through innovations are invited to apply for the WSH Innovation Awards 2023. Submit your application by 26 April 2023.

[Read More](#) →



OTHER EVENTS



Welcome to
Singapore Institution of Safety Officers
(SISO)

[HOME](#) [ABOUT US](#) [MEMBERSHIP](#) [WSH OFFICER](#) [EVENTS](#) [CONTACT](#) [SISO RESOURCES](#)

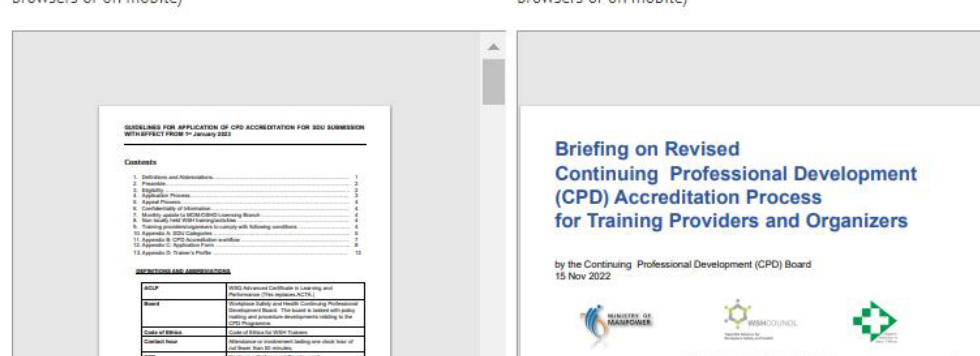
[Home](#) > [WSH Officer](#) > [CPD Application \(TP\)](#)

Training Providers/ Organisations applying for SDU

1. Please read the Guidelines and Application for Continuing Professional Development (CPD) Programme Course Accreditation Form
2. Submit your application at least 4 weeks before the start date of the course.
3. The Course Brochure and Certificate should indicate the Program Code and SDU point on the Course Brochure e.g. CPD/001/T1.2/2023009 and the awarded SDU.
4. If you have any queries, please address them to cpd@siso.org.sg.

Guidelines and Application for Continuing Professional Development (CPD) Programme Course Accreditation
Click this [link](#) if the viewer is not loading (does not work on some browsers or on mobile)

Continuing Professional Development (CPD) Briefing for Training Providers and Organisers
Click this [link](#) if the viewer is not loading (does not work on some browsers or on mobile)



Briefing Session on Revised CPD Framework for Training Providers

Learn how you can better serve WSH Officers with the revised CPD system. This briefing is for Training Providers and Organisers applying for Safety Development Units under the revised Continuing Professional Development Framework.

[Read More](#) →

Return to Work Coordinator Programme Workshop

This workshop is open to all healthcare and non-healthcare professionals interested in supporting workers to return to work (RTW). Participants will learn to use a systematic approach to identify barriers and facilitators to RTW, apply effective communication skills to collaborate with various stakeholders to develop an appropriate RTW plan.

[Read More](#) →

Share this WSH Bulletin



Connect with us



Resources
to improve your
WSH Practices



Events
on Workplace
Safety and Health



We regret that we are unable to reply to emails at this email address. For enquiries or feedback, please email us at contact@wshc.sg.

Visit the WSH Council's [website](#) now for updates on WSH-related matters, information and events.

**JOIN THE NATIONAL
WSH CAMPAIGN 2022**
STEP UP WORKPLACE SAFETY AND HEALTH
taketimetotakecare.sg



**TAKE TIME
TO TAKE CARE**
of your SAFETY and HEALTH

This WSH Bulletin is available free of charge, may be printed or downloaded onto electronic, optical or similar storage media provided that such activities are for private research, study, or in-house use only. If such material is to be copied or reproduced, users are asked to ensure that the material is reproduced accurately and not in a misleading context, that the status of the material is identified and to acknowledge Workplace Safety & Health Council, Singapore as the source of the material.

[Subscribe](#) | [Unsubscribe](#) | [Update profile](#)