

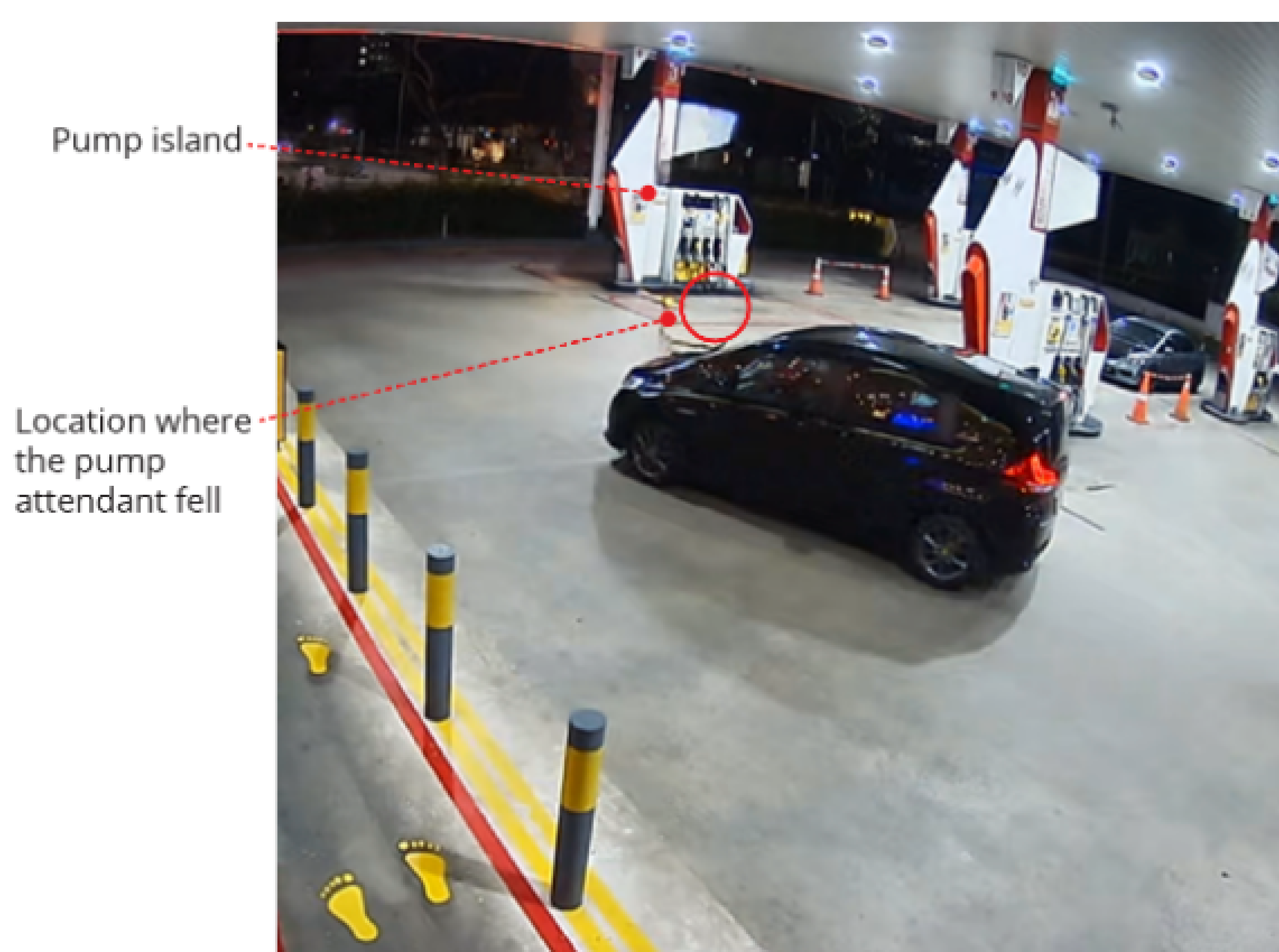
3
February
2023

WSH ALERT

FATAL ACCIDENT

Pump attendant knocked down by a car

On 19 January 2023, a pump attendant was walking towards a pump island when he was hit by a car exiting the petrol station. The attendant fell to the ground and later passed away due to his injuries.



Scene of the accident.

The WSH Council calls on all companies involved in operating petrol stations to do an urgent assessment of their traffic safety measures to prevent vehicle accidents.

What companies should do

Companies should urgently assess and ensure that their WSH management system includes the following measures or checks:

- **Traffic Management Plan (TMP):** Implement a TMP to minimise the risk of vehicle collisions and improve the safety of all persons at a petrol station. Suggested risk controls include:
 - implement a speed limit within the station and communicate this clearly via traffic signage;
 - install road humps or rumble strips at strategic locations to slow down vehicle movement;
 - post signage (e.g. at the pump island) and/ or road markings to remind drivers to keep a lookout for pedestrians;
 - place convex mirrors to eliminate blind spots within the petrol station; and
 - provide pedestrian crossing(s) that are clearly visible to drivers to facilitate safe people's movement to and from pump islands.
- **Hazard communication:** Brief workers on the possible workplace hazards and the dangers of distracted walking (e.g. walking while looking at one's handphone) at a petrol station. Movement to and from pump islands should only be at designated pedestrian crossings. Equip each worker with a high-visibility reflective vest.

For more information, refer to WSH Council's [WSH Guidelines on Workplace Traffic Safety Management](#) and [6 Basic WSH Rules for Traffic Management](#).

Under the WSH Act, first-time corporate offenders may be sentenced to the maximum fine of \$500,000 whilst individuals can either be sentenced to the maximum fine of \$200,000 and/or an imprisonment not exceeding 2 years. Read more on the [WSH Act penalties](#).

During the Heightened Safety Period (1 September 2022 to 28 February 2023), the Ministry of Manpower will impose severe actions for serious WSH lapses, which include:

- Debarment from hiring new work pass holders
- Company leaders to personally account to MOM and take responsibility for rectifications
- Engaging external auditors to conduct a thorough review of company's WSH processes

* Information on the accident is based on preliminary investigations by the Ministry of Manpower as at 31 January 2023. This may be subject to change as investigations are still on-going. Please also note that the recommendations provided here are not exhaustive and they are meant to enhance workplace safety and health so that a recurrence may be prevented. The information and recommendations provided are not to be construed as implying liability on any party nor should it be taken to encapsulate all the responsibilities and obligations under the law.

Share this WSH Alert



Connect with us



Resources
to improve your
WSH Practices



Events
on Workplace
Safety and Health



We regret that we are unable to reply to emails at this email address. For enquiries or feedback, please email us at contact@wshc.sg.

Visit the WSH Council's [website](#) now for updates on WSH-related matters, information and events.

**JOIN THE NATIONAL
WSH CAMPAIGN 2022**
STEP UP WORKPLACE SAFETY AND HEALTH
taketimetotakecare.sg



**TAKE TIME
TO TAKE CARE**
of your SAFETY and HEALTH

This WSH Bulletin is available free of charge, may be printed or downloaded onto electronic, optical or similar storage media provided that such activities are for private research, study, or in-house use only. If such material is to be copied or reproduced, users are asked to ensure that the material is reproduced accurately and not in a misleading context, that the status of the material is identified and to acknowledge Workplace Safety & Health Council, Singapore as the source of the material.