

WSH Tech for Construction



Provide evidence-based, insightful and practical solutions

© 2021 Singapore Workplace Safety and Health Institute. All Rights Reserved

Alvin Tan
Senior Manager,
WSH Technology, WSH Institute
12 July 2021

WSH Institute is part of the Occupational Safety and Health Division in the Ministry of Manpower

The WSH Tech team in WSH Institute was formed to support one of the 3 key strategies laid out in WSH 2028 – Promote Technology-Enabled WSH :

(i) To translate WSH challenges into technology plans to:

- Reduce accident risks caused by human error/judgement (or unsafe behaviour / lack of situational awareness)
- Minimise jobs that are dull, dangerous or repetitive (including hazardous work environment)
- Assess physical and cognitive fitness to catch potential problems before accidents occur (health affecting work safety)

(ii) To promote effective market-ready solutions for sector wide adoption, and grow the WSH technology ecosystem in Singapore.

A coordinated approach to integrate WSH into the tech ecosystem

For market ready solutions, we are working with sector leads to incorporate WSH requirements or solutions into the sectoral Industry Digital Plans



For solutions in prototype stage, we support pilot testing via sector leads' innovation platform

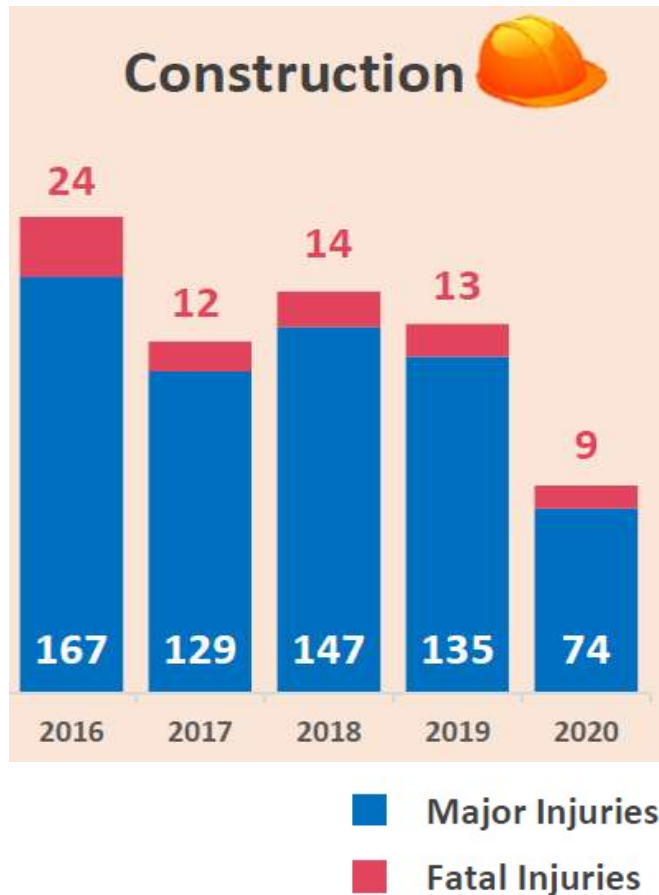
SG:D | OPEN INNOVATION PLATFORM



Where no visible solutions are available, we leverage on Research Institutes and Institutes of Higher Learning to conduct research & development.



WSH problems in construction and using tech to mitigate risks



TOP CAUSES OF WORKPLACE INJURIES

(Fatal) Across sectors: FFH and Vehicular accidents

(Major) Across sectors: STF

(Fatal) Construction: FFH

(Major) Construction: FFH and STF

Injury types	Possible tech mitigation
FFH	ePTW, Drones, Geofencing, Health monitoring
STF	Wearables, Vision AI, Health monitoring
Vehicular accidents	ADAS, DSMS, Blind spot detection, 360 camera and proximity sensors

WSH solutions in sectoral Industry Digital Plan (IDP)



<https://www.imda.gov.sg/programme-listing/smes-go-digital/industry-digital-plans/Construction-and-Facilities-Management-IDP>



<https://www.imda.gov.sg/programme-listing/smes-go-digital/industry-digital-plans/logistics-idp>



WSH solution categories under Construction and Facilities Management IDP



e-Permit-to-work (e-PTW)



Digital Wearables for Workers' Health and Safety



Integrated and Smart Worksite Monitoring and Inspection

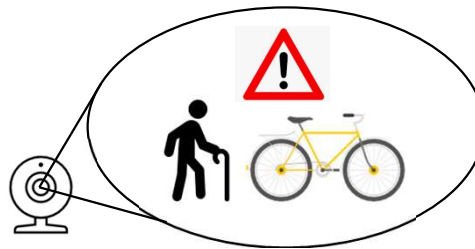
WSH solution categories under Logistics IDP



Fleet safety management

Vehicular Safety Technology and their functions

Advanced Driver Assistance System (ADAS)	Driver Status Monitoring Systems (DSMS)	Blind Spot Detection	360 Degrees Camera	Proximity Sensors
<ul style="list-style-type: none"> Forward Collision Warning Lane Departure Warning Headway Monitoring Warning Traffic Sign Recognition 	<p>Alerts driver of abnormal driving status such as:</p> <ul style="list-style-type: none"> - Fatigue - Distraction - Smoking - Cell phone usage 	<p>Assists driver to avoid collision by detecting vehicles and pedestrians in blind spots when changing lanes or turning.</p>	<p>Provides real-time view of area surrounding vehicle</p>	<p>Alerts driver when vehicle is too close to a person or an object.</p>



Listed on PSG

Logistics: Fleet Safety management



Electronic Permit-to-Work (E-PTW)

E-PTW is a well established digital technology with many service providers in the market. It is featured as one of the solutions in the Construction and Facilities Management IDP, with funding support available.

Benefits of E-PTW include:

- Improved safety through audit trail – ensures qualified person approve the PTW
- Protection against falsification of PTW – cannot backdate
- Full visibility of which high risk activities are ongoing and which PTWs have closed
- Dashboard to help safety supervisors identify conflicting works and overdue permits
- Enhanced productivity – reduces paper work and waiting time; assigns to other staff easily to cover staff absences

Listed on Advanced Digital Solutions (ADS) and Productivity Savings Grant (PSG)*



Internet of Things (IoT) sensors, Geofencing and Worker Tracing

Advancement in IoT technology enables transformation of construction sites and facilities management into smart workplaces, to improve both safety and productivity.

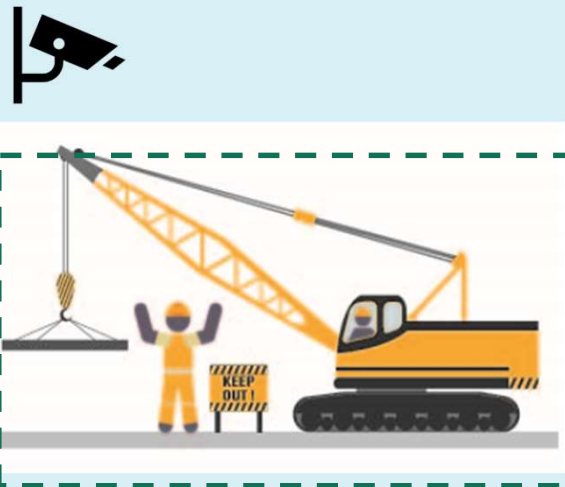
IoT Sensors

Connect workers and equipment to provide real-time monitoring of construction site personnel and environment. E.g. Operation of equipment, confined space monitoring.



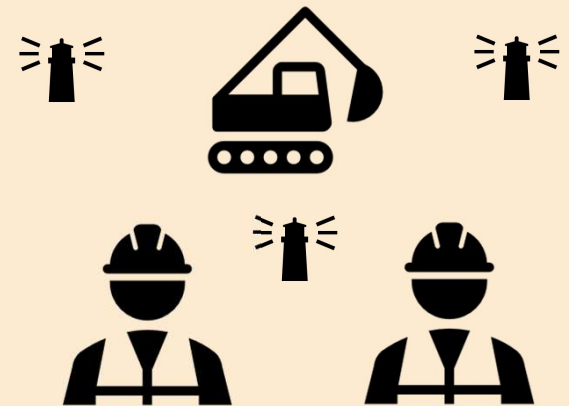
Geofencing

Draw virtual boundaries around high risk areas.



Worker Tracing

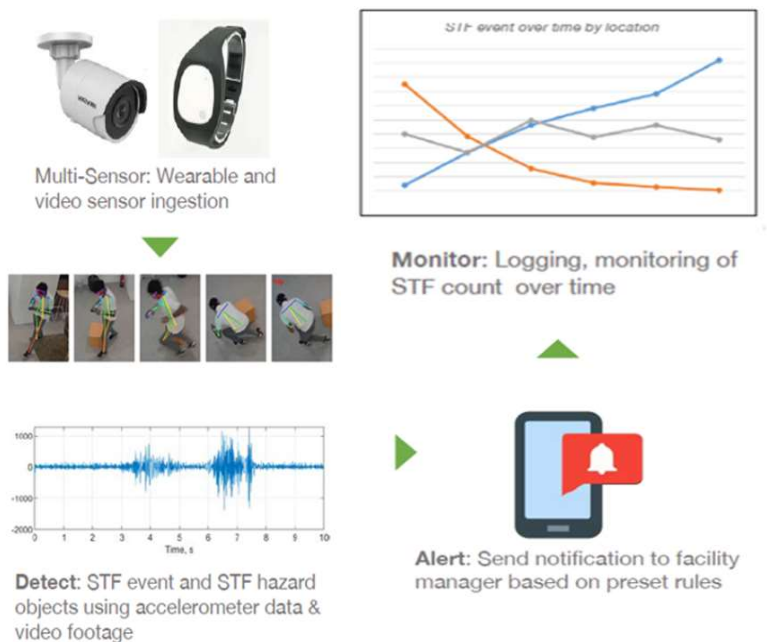
Ensure workers are at the right place at the right time and detect lone workers in distress



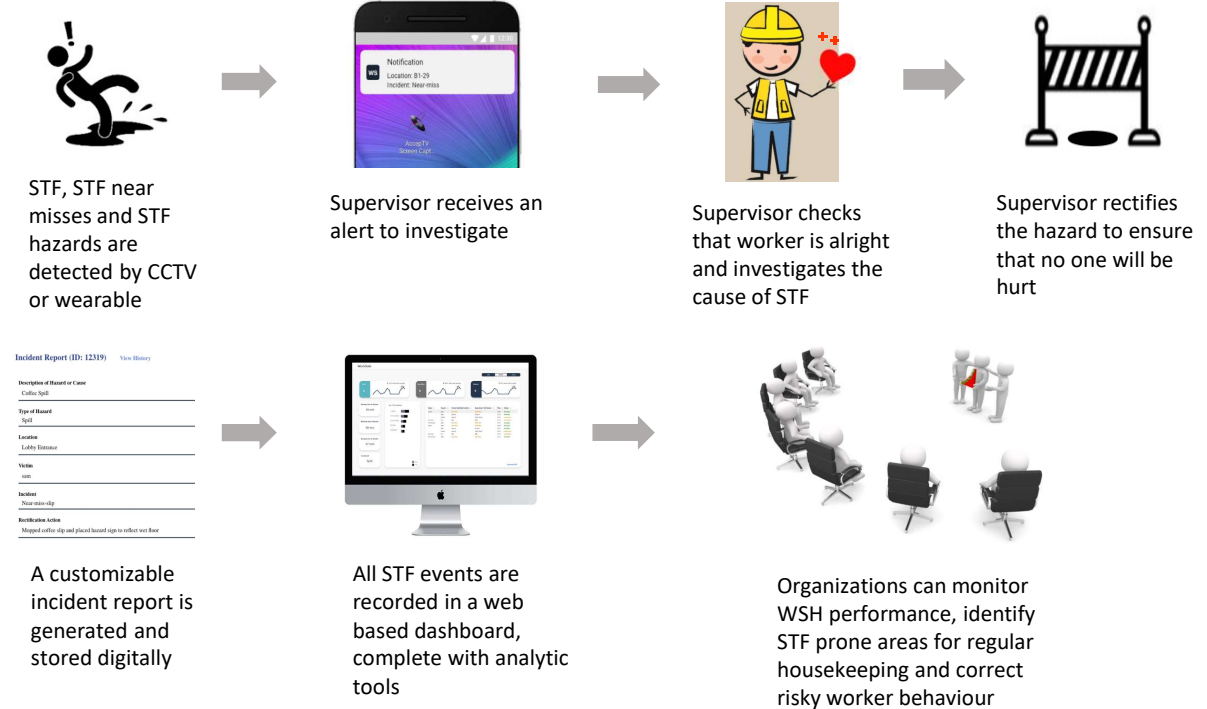
STF prevention solution using wearables and vision AI

WSHI launched a problem statement via BEAMP:D on OIP in Apr 2020 to seek solutions for slips, trips and falls (STF)

Use case for STF prevention solution



Source: Vulcan AI Pte Ltd



Use case for STF prevention solution



Source: Channel News Asia <https://www.channelnewsasia.com/news/singapore/new-ai-system-seeks-to-prevent-slips-and-falls-at-workplaces-14465912>

Benefits and application of STF prevention solution



Source: (CNA) Sharul from CTM explaining how they improved their SOP after detection of 2 near misses at the plant



Source: (Frontline) Steven Goh from BATU sharing the STF prevention technology on Channel 8, Frontline, 12 Mar 2021

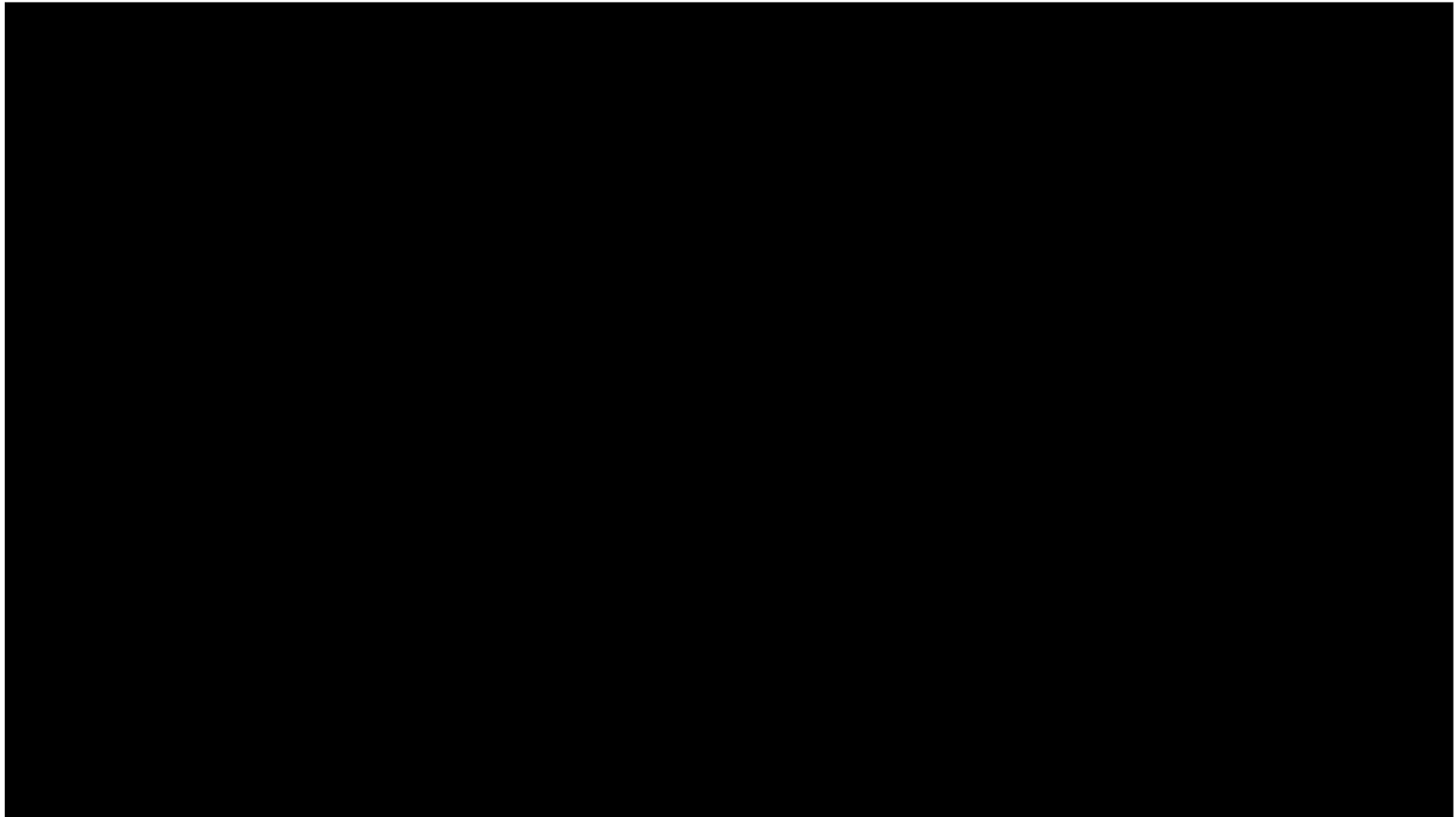
Key Benefits

- Detecting near misses allows early intervention to remove the hazard or correct risky worker behaviour
- Ability to render prompt assistance
- Heightened safety awareness
- Audit trail for action taken
- Automated generation and digital storage of STF reports



Source: Vulcan AI Pte Ltd

Drone technology reduces WAH risks for building façade inspections



Source: H3 Dynamics <https://www.youtube.com/watch?v=gknz2zdiNCg>

Worker health monitoring

Coronavirus: Tracking workers' health with mobile apps, wearable devices

Massive effort to ensure safety made possible with use of mobile apps, wearable devices



Source: Nervotec

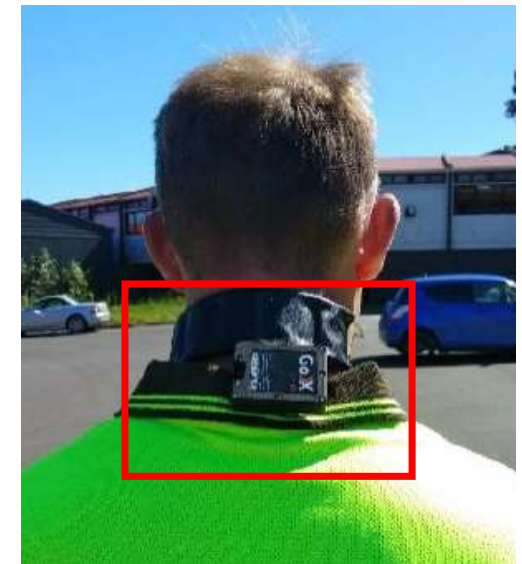


ICA's wristband device (left) uses an app and another "gateway" device, while MOM's smartwatch works on its own. PHOTOS: CHONG JUN LIANG, MINISTRY OF MANPOWER

Source: The Straits Times (published 12 Aug 2020)



Source: Damstra Vault Solo



Source: GoX

There is grant support for specific WSH Tech

- The **Productivity Solutions Grant (PSG)** supports businesses in the adoption of IT solutions or equipment that improve productivity. Receive up to 80% funding support for eligible costs.
- The **Advanced Digital Solutions (ADS)** supports businesses in adopting solutions for safe re-opening and long-term digitalisation to digitise workflows and reduce reliance on manpower. Receive up to 80% funding support for cost of integrated digital solutions.

Find the list of pre-approved solutions in the GoBusiness Gov Assist portal and IMDA website

Pre-scoped IT Solutions for Building & Construction	
Solutions supported under the Productivity Solutions Grant are regularly reviewed. Do take note of the current support levels and grant caps.	
e-Permit-to-work (e-PTW)	+
FM Workflow Automation	+
Quantity Surveying and Valuation	+

<https://govassist.gobusiness.gov.sg/productivity-solutions-grant/itsolution/buildingconstruction/>



About Who can Apply Funding Support Contact	
• Be in a financially viable position to start and complete the project.	
Enterprises can contact the project leads of the ADS projects they are interested in. More will be added progressively.	
List of supported ADS projects	
+ Expand All - Collapse All	
Construction	
Facilities Management	
Project Information	Contact Details
Project Name: Remote Digital Assistant (Artificial Intelligence (AI)-enabled Equipment Performance Management)	
Tailored AI-enabled digital assistant solution to	

<https://www.imda.gov.sg/advanceddigitalsolutions#Facilities-Management>



Calling for good solutions

Solution providers with good WSH technology proposals can email contact@wshi.gov.sg with a write-up of how the solution can improve WSH.

You can feedback to us on WSH issue(s) you face and share solution(s) that you have tried or are exploring

We want to hear from you

We look forward to your feedback on the WSH issues(s) you face and the solution(s) that you have tried or are exploring:

For construction companies:

[Go.gov.sg/construction-tech-feedback](https://go.gov.sg/construction-tech-feedback)

