

Learning Journey on Vehicular Safety **2022**

System for Collision Avoidance and
Pedestrian Detection (SCAPeD)

4 November 2022



GEODIS

Keppel Technology & Innovation

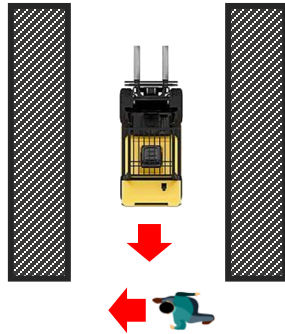
25% of
workplace
fatalities
in 1H 2022
involves vehicles

Vehicular incidents are consistently
one of Singapore's leading causes of
workplace fatalities and major
injuries

Poor awareness can result in collisions

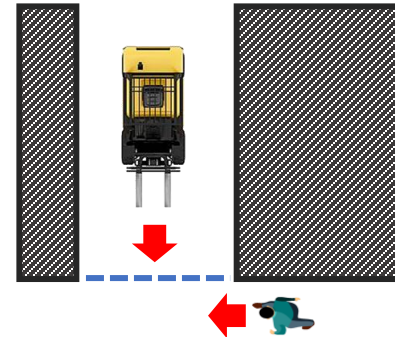
1

Collision with people in aisle / open corners



2

Collisions around blind corners



Reducing vehicular incidents through **Collision Avoidance**



Integrated HSE ecosystem

Immediate actions

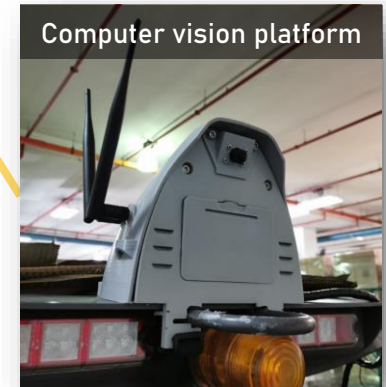
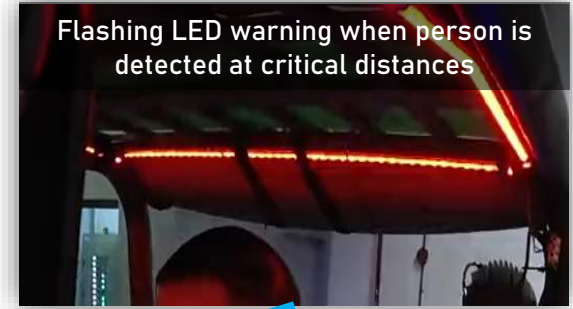
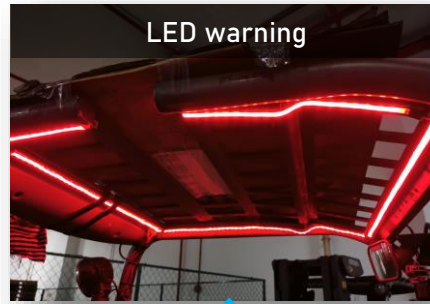
Active real-time monitoring to alert driver/pedestrian to take immediate corrective action

+

Post action analysis

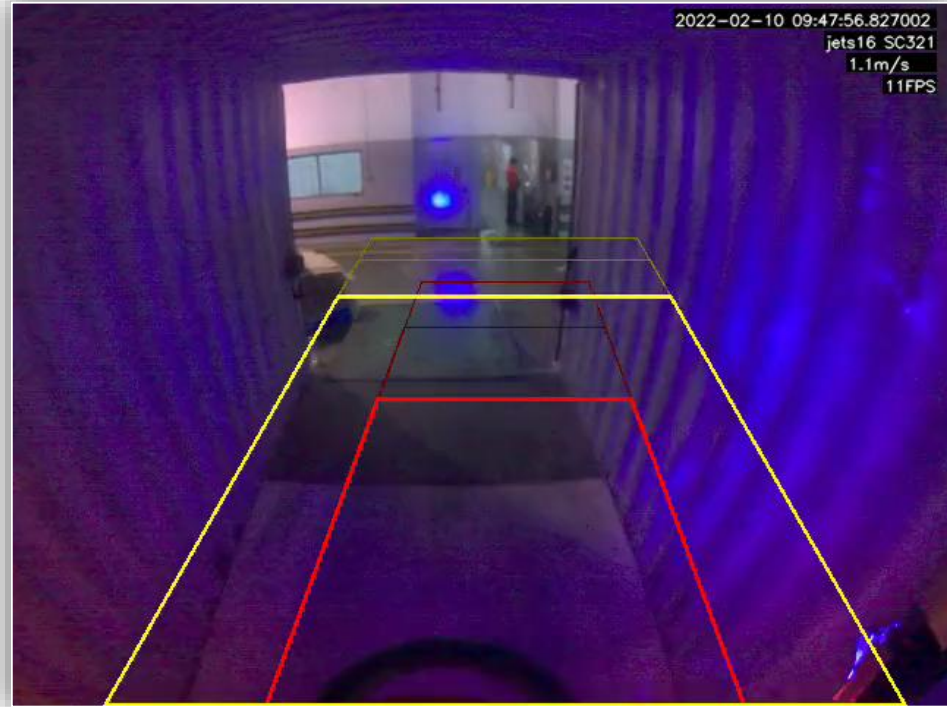
Analytics and insights to identify hot spots, near misses, errant drivers for future corrective action

Active monitoring using **computer vision**

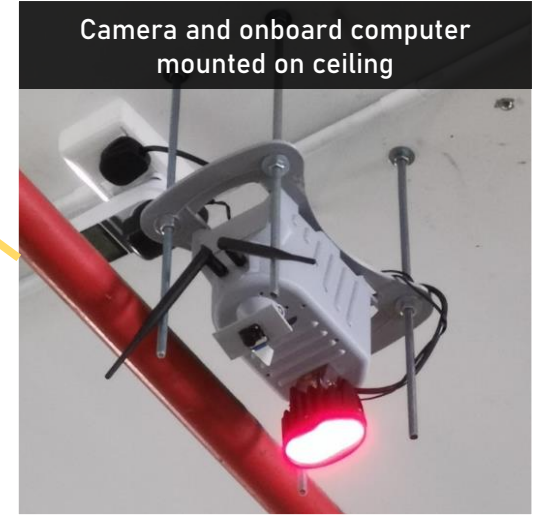
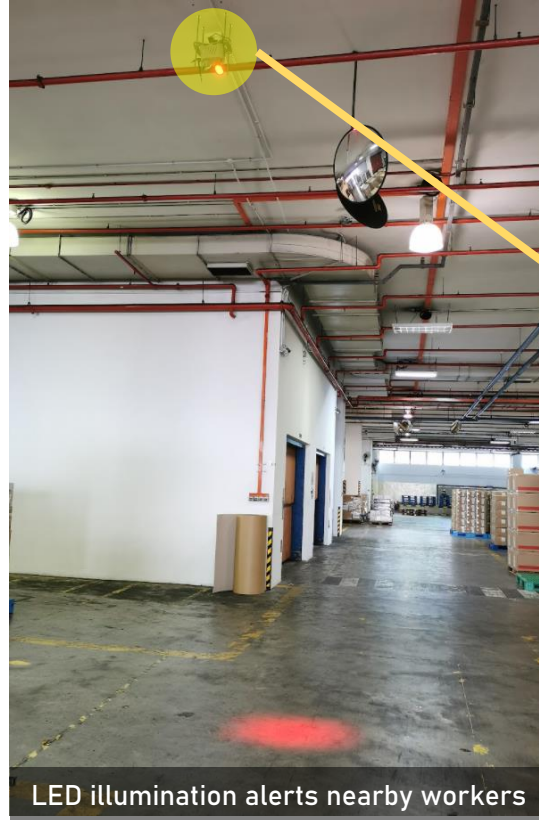


Active monitoring using **computer vision**

Footage of unit in action in a non-controlled environment.



Alerting workers near **blind spots** at junctions

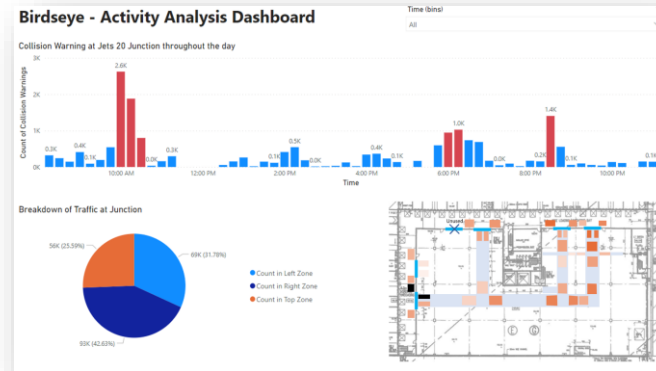
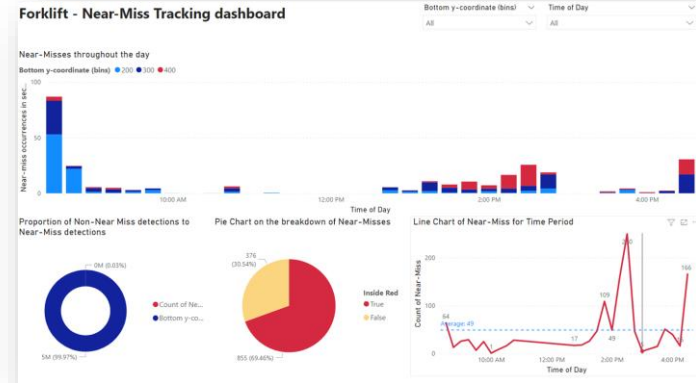


Alerting workers near **blind spots** at junctions

Footage of unit in action in a non-controlled environment.

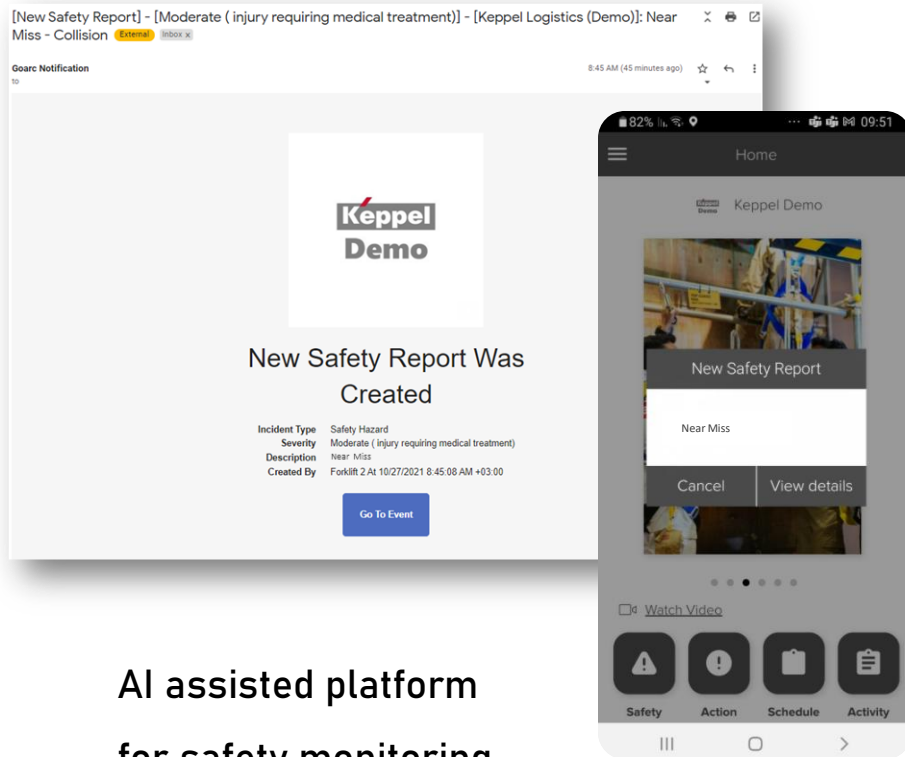


Preventive measures using data analytics



Analytics and insights to drive implementation of preventive measures before incidents can happen

Real-time Operational Management with



AI assisted platform
for safety monitoring
and management

Thank you



Tripartite Alliance for
Workplace Safety and Health

