



Sharing our Best Practices and WSH Technologies

Contents of Presentation



1. Company Introduction

2. Sharing of Our Best Practices

3. Adoption of Technology to Improve WSH



We specialised in General Building & Civil Engineering Works And Supply & Installation of Sanitary, Plumbing & Gas Services

Our Notable Projects



MOM Bendemeer



FernGreen Primary



Ai Tong School



Singapore Poly



NTU Student Hostel - PPVC



Tampines Nursing Home (PPVC)



Sengkang West Bus Depot



Jurong West Nursing Home



Tampines East CC



**Yunnan Garden
(With ABC Waterway)**

Our Safety Achievements



Several safety awards since 2011, including 3 bizSAFE Awards (2022) and 1 SHARP Award (2022)

bizSAFE Star
since 2008



obtained **ROSPA Gold Award** consecutively since 2015



Commitment of Top Management

Driving WSH Initiatives

- Ensuring sufficient resources is allocated for WSH
- Allow direct reporting of feedbacks and suggestions to Top Management through various channels
- Constantly acquiring WSH knowledge through trainings, attending seminars and getting updated with industry best practices and standards
- Personally review risk assessments with sub-contractors
- Champion WSH efforts in the Company to set positive example and culture



Placing Emphasis on WSH Trainings



Conducting VR (Virtual Reality) simulator training for MEWP operators to enhance their competency in situational awareness and in operating the machinery

Placing Emphasis on WSH Trainings



Behavioral-Based Safety Training



Lifting Safety Training



Work at Height Training



Electrical Safety Training



Safe Work at Height and Safe Operation of MEWP Training for migrant workers by trainer to converse in their native language

Taking Care of Worker's Health

Regular in-House Health Screenings



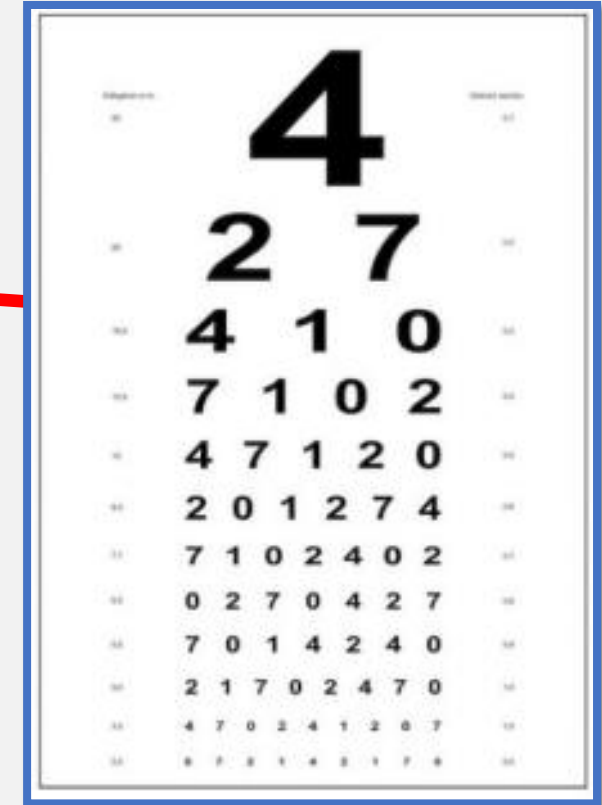
Checking of workers blood pressure



Checking of worker's height and weight for BMI

Taking Care of Worker's Health

Regular in-House Health Screenings



Conduct of Snellen's Eye Test for workers

Taking Care of Worker's Health

Daily Exercise and Meditation Regime



Maintaining good physical and mental health of workers

Review of Risk Assessment with Top Management



Review risk assessment of sub-contractors with Top Management

Involving Sub-Contractors in Pledge For Zero Signing



Involving sub-contractors top management in Pledge for Zero signing during WSH campaign

Top Management Engagement with Foreign Workers



Engaging in dialogue session with migrant workers through translator to understand ground concerns and feedbacks from the workers

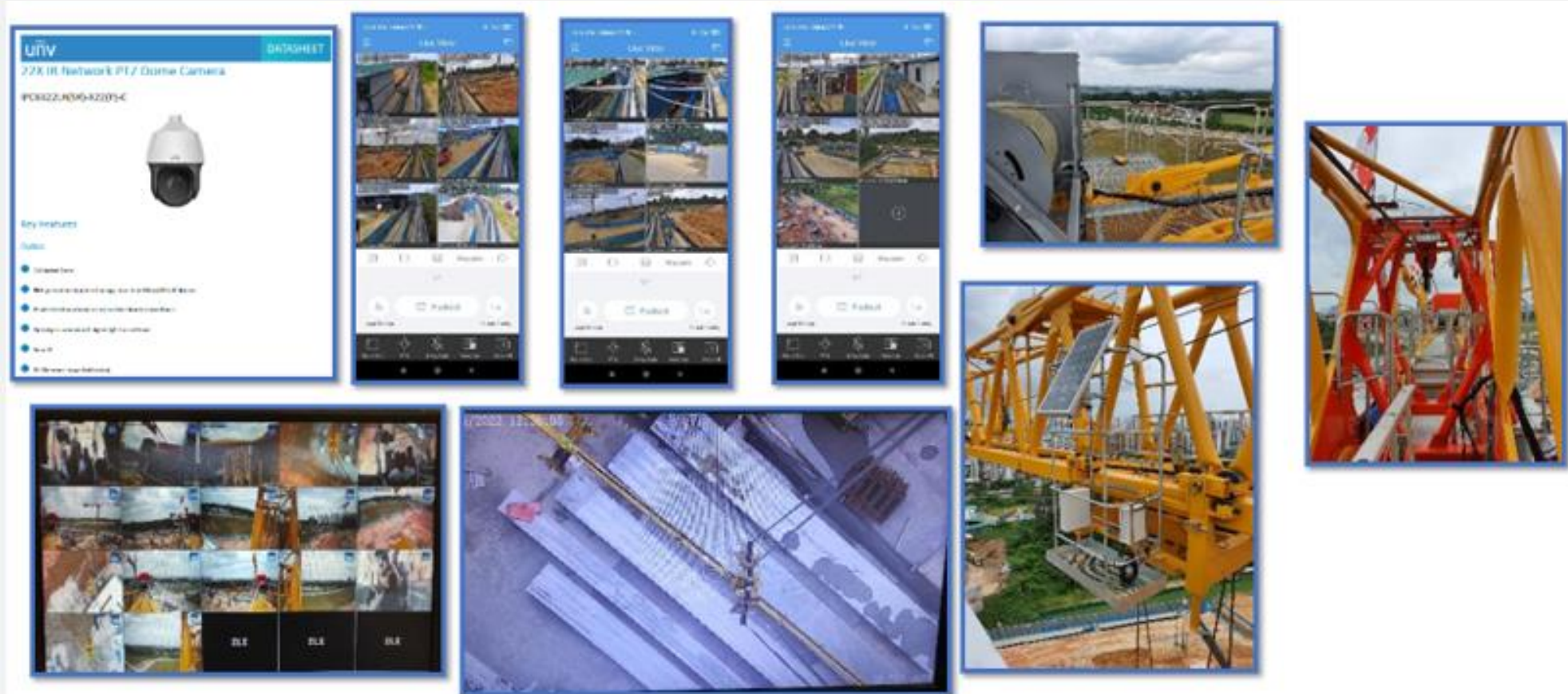
Automated Lightning Alert Warning System



Provision of Automated Lightning Alert Warning System

Adoption of Technology to Improve WSH

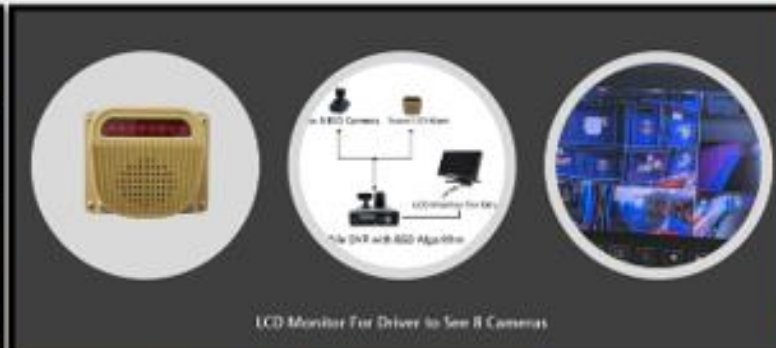
CCTV Installation for Surveillance



Use of CCTV on Tower Cranes and on Site CCTV viewable through mobile devices

Adoption of Technology to Improve WSH

AI Camera on Telescopic Handler



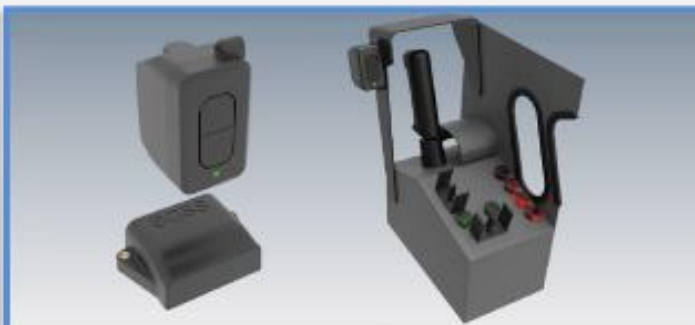
Rear cameras



Side cameras

Adoption of Technology to Improve WSH

Use of MEWP EQSS Overwatch



MODEL6253 – OverWatch™ Scissor Operator Detection System



The EQSS OverWatch™ is an innovative approach to secondary guarding for use with scissor lift EMVs. The system works on the premise of detecting the operator's position and movements, with respect to the lift's direction of movement. OverWatch™ uses the latest 2D and inertial measurement technologies, coupled with a powerful MCU enabled processor running EQSS proprietary AI and advanced sensor fusion algorithms. The OverWatch™ is the first truly visible, robust, unobtrusive and cost-effective secondary guarding solution presented to the market to date for scissor lifts.



Features:

- Real Time measurement of the operator
- Spatial movement measurement of the EMV
- Smart AI algorithms for crash detection events
- Adaptive sensor fusion code for enhanced detection
- Inertial, robust and non-invasive external sensor
- IoT AI configuration and diagnostics as standard
- Internal web page accessible by Wi-Fi
- Audio output with synthesized voice commands
- Multipurpose light notification LED
- Simple aftermarket integration and installation
- Voice notification of movement detection
- Buck through doorway (bto) detection
- Wide operating voltage for 12V and 24V machines
- Optical inputs and solid state high-power output
- Patented Concept and Technology
- Measurement of individual operator on dead man trigger
- Expandable hardware architecture for custom OEM control
- Real time data logging with event playback 8000+ samples
- Internal clock for time stamped event logging
- High Density, 40+ pin connector for OEM integration
- Rapid installation < 30 minutes for OEM supported models
- Automatic calibration, diagnostics and self-healing
- Functional Safety architecture to SIL2 / PL1



Detection sensor on scissor lift to prevent entrapment hazard to operators

Sharing of Good Practices with Industry Stakeholders



Sharing of Site Best Practices



Invited SCAL, Workplace Safety & Health Sub-Committee members and some members from WSH Council for site visit and sharing of best practices on 16 February 2022

Sharing of Good Practices with Industry Stakeholders

Sharing of Site Best Practices



Invited other Main Contractors for site visit and sharing of best practices on 22 April 2022

Sharing of Good Practices with Industry Stakeholders

Sharing of Site Best Practices



Visit from LTA Officers from other worksites for sharing of best practices on 29 September 2022

A short video on our WSH Technology Adaptation



Use of MEWP EQSS Overwatch

THANK YOU