



Facade Cleaning/ Painting Robots



ABOUT US

Aegis Building & Engineering Pte Ltd was established in 2002. Over the years, our relentless pursuit of excellence in providing the best conservation, maintenance and repair services for buildings has earned us unrivalled reputation in the industry and made us a clear leader in the field.



As part of our growth strategy and to better serve the needs of our clients, we have expanded our service offering to include the supply of quality and skilled tradesmen for hotels, malls and industry buildings, delivering winning outcomes for our clients.

Our passion, reliability, commitment and trust built has allowed us to establish a strong long-term working relationships with key clients such as Marina Bay Sands, Shangri-la Hotel, Hilton Hotel, Wyeth, Pfizer and many others.

We embrace innovation in our operations and are committed to conduct our business in the most safety-conscious and environmentally responsible manner.

We hope to continually lead the future of our industry through setting exemplary standards in the delivery of the best quality and value for money services to our clients.

With a payout capital of S\$1,000,000 and a financial grade of C1, we are capable of undertaking all scope of building conservation, maintenance and repair works, as well as ensuring a supply of quality skilled tradesmen to meet clients' operational needs.





OUR MISSION, VISION AND VALUES

VISION

To be the lead provider of quality, sustainable and technology driven total building and engineering services.

MISSION

To deliver excellent total facilities management services with sustainable best practices, driven by quality workforce and innovative technology, which satisfy the needs and exceed the expectations of our clients, business partners, stakeholders and the community.

VALUES

Aegis

Accountability: We honor our commitments and take absolute responsibility for our work, as reliability and responsibility is the core of accountability.

Excellence: We emphasize attention to detail and believe that the strongest foundation for success is delivering our services with quality and utmost integrity.


Green Approach: We respect the planet we are in and are committed to operate our business in an environmentally responsible manner.

Innovative: We value innovative efforts and ensure that great ideas are appropriately acted upon to continually improve our business processes and services.

Safety: We place workplace safety as top priority and ensuring the safety of our staff is fundamental to our business.

Table of Contents



- Current Market Practices for Facade Cleaning & Painting
 - Issues with Current Practices
 - Safety Incidents
 - Aegis's Approach : Automation
 - Other features
 - Benefits of automation
 - Comparison
 - Quality and Performance
 - Summary
- 



Current Work at Height Practices for Facade Cleaning & Painting

4 Facade Cleaning & Painting Methods:

1. Rope Access ("Spiderman")
2. Rope Suspended Platform
3. Mobile Elevated Work Platform (Boom lift/ Scissor lift)
4. Scaffolding



Issues with Current Facade Cleaning/Painting Methods

1. Safety is a key issue for working at height
2. Consistency & Productivity based on workers
3. Training & Competency required for workers

Safety Incidents



UK 2021



2022 Kuala Lumpur

Safety Incidents in SG



Sengkang Edgefield Plains February 2022



Yishun Ring Road April 2019



Raffles-Republic Plaza 2019

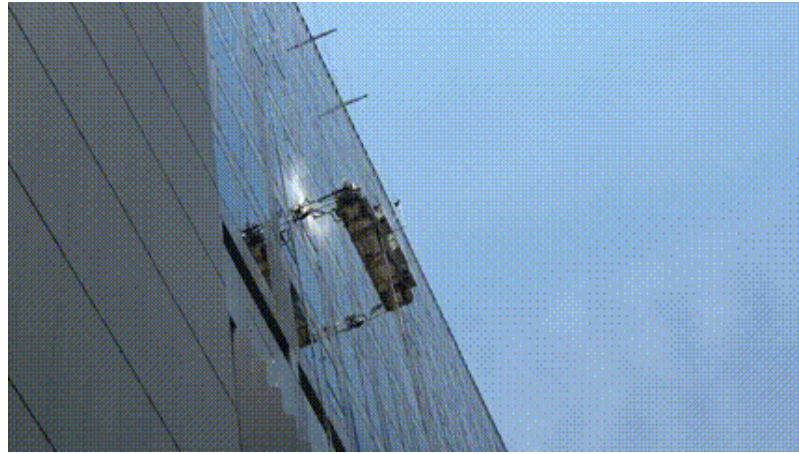


7 out of 40 workplace fatalities this year is due to fall from heights

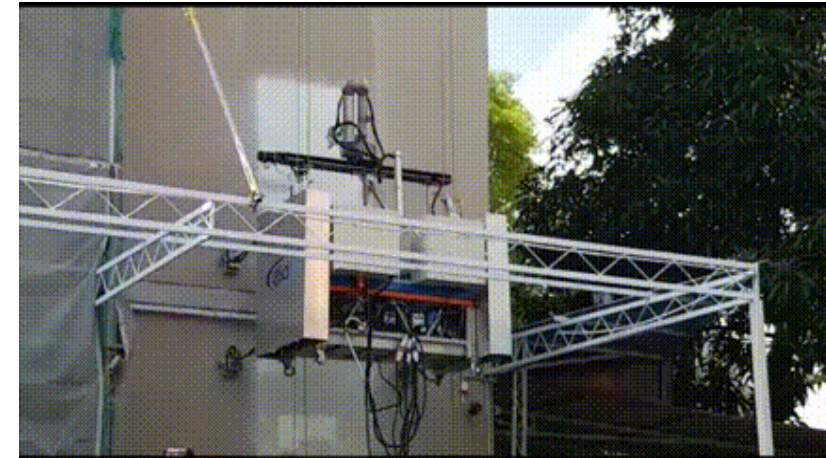
Aegis's Approach: Automation



Surface preparation



Cleaning

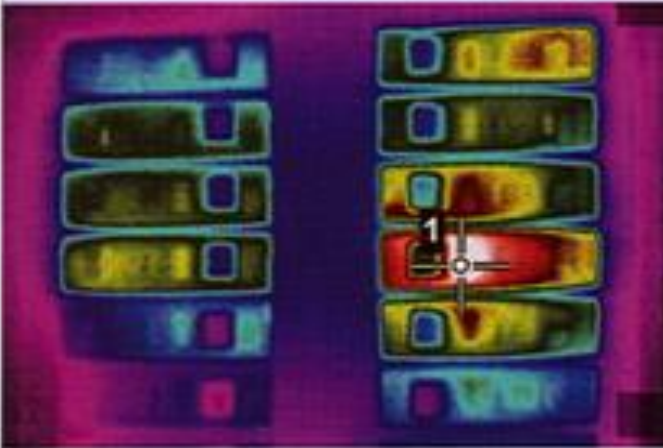


Painting

Other features

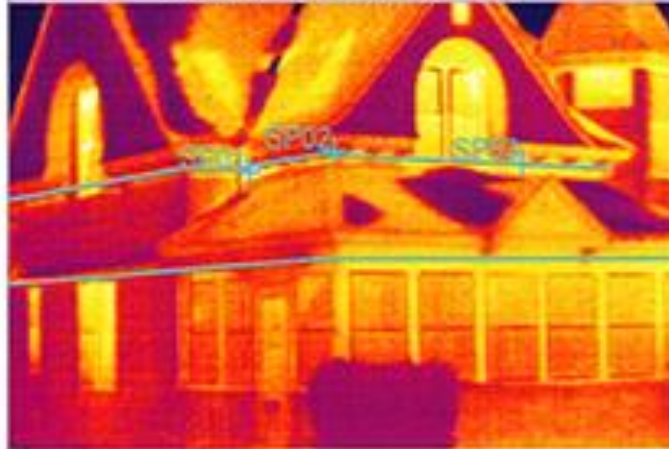
- Water Tightness Test and Inspection Processes

Locate Electrical Problems



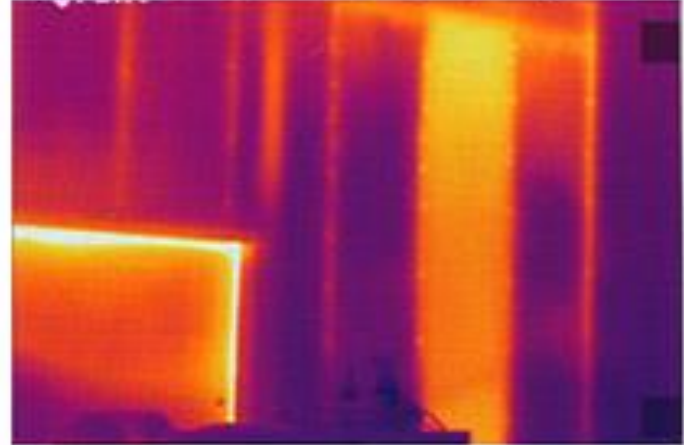
Issues with electrical connections, wiring or other system components are clearly highlighted as "hot spots" with infrared imagery — making them easy to locate and repair as part of an ongoing restoration project or building addition.

Quickly Diagnose Building Conditions



Buildings may be quickly and thoroughly scanned via infrared, identifying problem areas that can't be seen by the naked eye - ensuring the integrity of both structural and environmental systems for building inspection, repair verification and insurance purposes.

Easy Noninvasive/ Non-destructive Testing

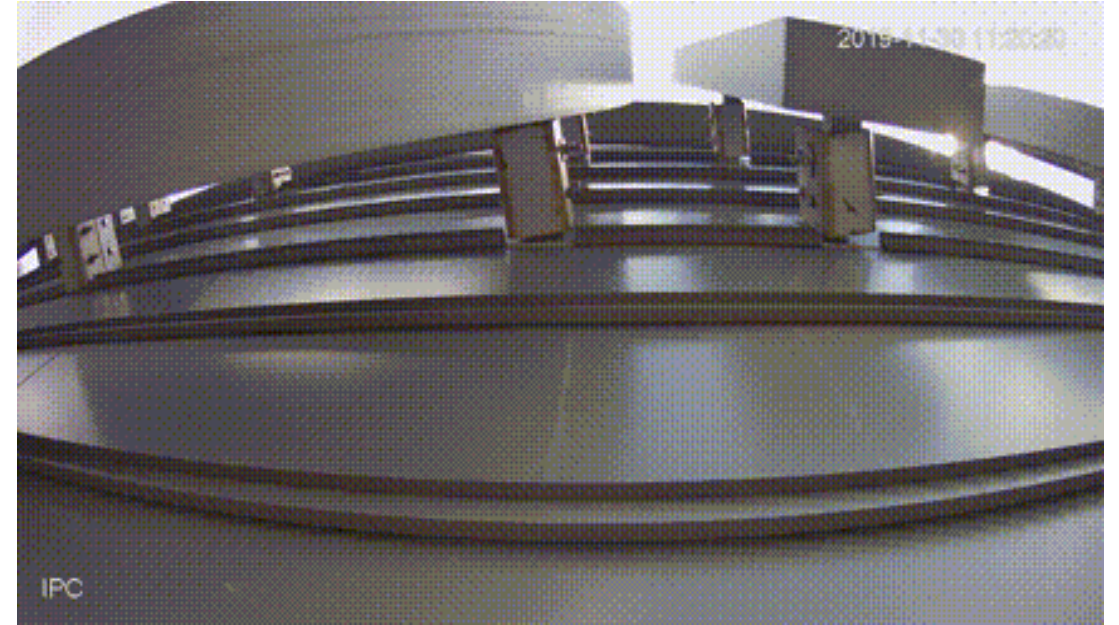


Facilitate repairs quickly, easily and safely as infrared minimizes the need for building disassembly - for minimal repair time, labor costs and disturbance of habitants, as well verification of a job well done. Missing insulation is clearly detected in the image above.

Other features



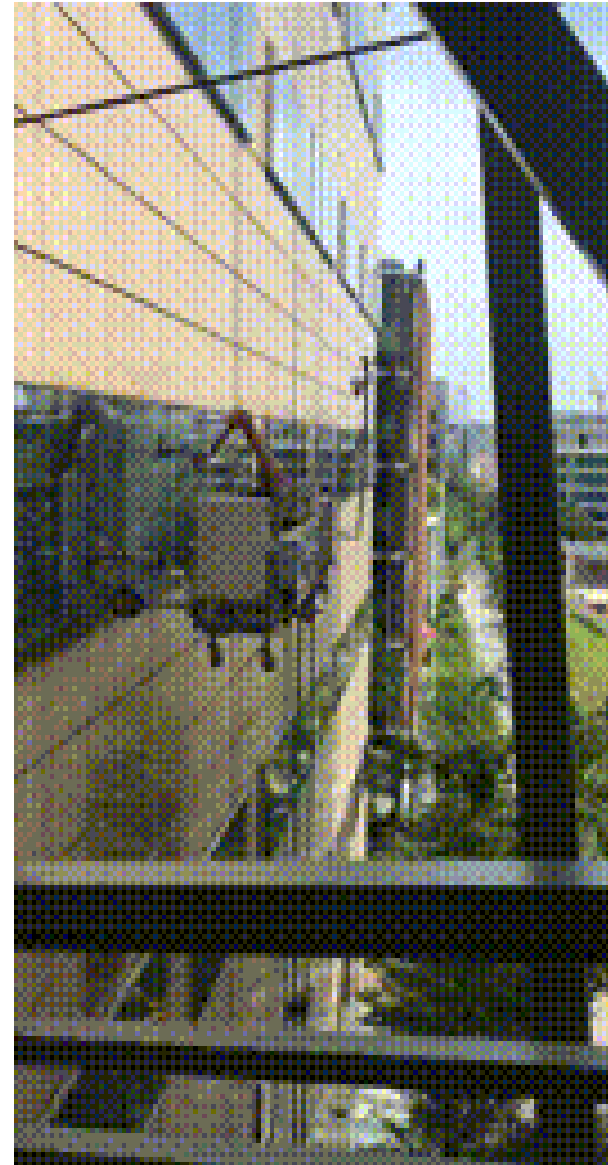
Water-Tightness Test



Inspection

Comparison

Aspect	Robot	Human
Safer	✓	
Less Labour Intensive	✓	
Faster Working Speed	✓	
Cleanliness	✓	
Quality Control (QC)	✓	
More Productive	✓	
Night Work Quality	✓	
Reduce Material & Wastages	✓	
Real time feed	✓	
Promotes quality and consistency	✓	



Quality and performance

Cleaning



Before



After

Painting



Before



After

Summary

- Greatly reduce the risk of workplace injuries and fatalities.
- Improve the efficiency and consistency of façade painting and cleaning.
- With the ever-changing obstacles to employing foreign workers, automation would be necessary to reduce our reliance on them

THANK YOU

We look forward to serving you soon.

AEGIS BUILDING & ENGINEERING PTE LTD
135 UBI AVENUE 4, SINGAPORE 408771
TEL: 6532 1121
FAX: 6692 2971
SALES@AEGIS-BE.COM.SG
AEGIS-BE.COM.SG