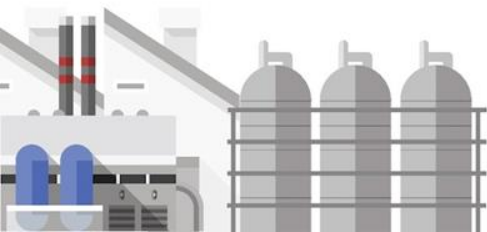




Partnership towards better WSH Performance

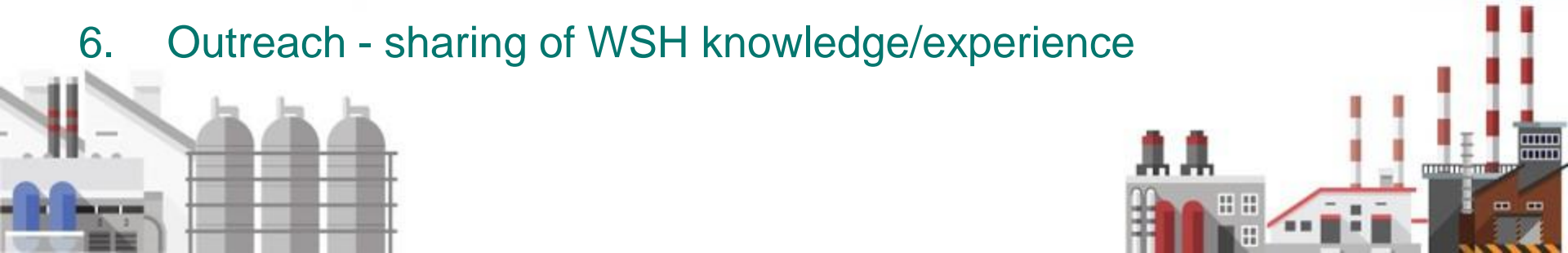
Er. Ng Chee Wai
General Manager (Plant), PCS Pte. Ltd.



Content



1. About PCS
2. ACOP on Chief Executives' and Board of Directors' WSH Duties
3. Partnership with Contractors
4. Contractor Evaluation & Selection
5. PCS HSE programmes
6. Outreach - sharing of WSH knowledge/experience



1. PCS



**Jurong
Island**

PCS PTE. LTD.

(formerly known as
“Petrochemical Corporation of
Singapore (Private) Limited”)



1. PCS



Upstream company of Singapore Essential Chemicals Complex on Jurong Island

1977 – incorporation

supply high quality ethylene, propylene, acetylene, butadiene, 1-butene, MTBE and benzene to companies within Jurong Island

1984 – first ethylene plant (cracker) in Southeast Asia on stream

1997 – second cracker unit on stream

Present shareholders

Japan-Singapore Petrochemicals Co., Ltd (50%)
(JSPC led by Sumitomo Chemical)
QPI and Shell Petrochemicals (Singapore) Pte
Ltd (50%) [*QPI: Qatar Petroleum International]

2. ACOP on Chief Executives' and Board of Directors' WSH Duties



Principle 1

Ensure WSH is integrated into business decisions and have clarity of roles and responsibilities of Chief Executive and individual members of the Board of Directors in leading WSH

Principle 2

Continuously build a strong WSH culture, set the tone and demonstrate visible leadership in embodying and communicating highly effective WSH standards

Principle 3

Ensure that WSH management systems are highly effective and reviewed regularly

Principle 4

Empower workers to actively engage in WSH



2. ACOP on Chief Executives' and Board of Directors' WSH Duties



1. For each principle there are measures that companies can implement to demonstrate leadership in improving WSH performance and management
2. For PCS, different stakeholders went through the list of measures to identify gaps and areas for improvement
3. PCS and our contractors see mutual benefits to take ownership and be motivated to drive good WSH performance ... it is good for business
4. Today, I will focus on the partnership and engagement with contractors, PCS HSE programmes and sharing of WSH knowledge/experience with others



3. Partnership with Contractors

PCS HSE History and Evolution



**Central HSE Committee
till 2Q 2004**

**ISO 14001 – Jan 2000
OHSAS 18001 – Nov 2002**

**HSEMS
1st issued
Jan 1997**

1997: Care[®]; SCIC
HSE + Process Safety
Management System

1999: Subscribed
Responsible
Care[®]; SCIC

2004 2Q:
Established RC
Committee

2009:
SS 506 Part 3

**2020:
SS 651:2019**



SS 651:2019 is an integration of
SS ISO 45001 and SS 506 Part
3 process safety elements

**Singapore Standard SS
506 Part 3 in Dec 2009**
(amalgamation of Process
Safety and OHS elements)

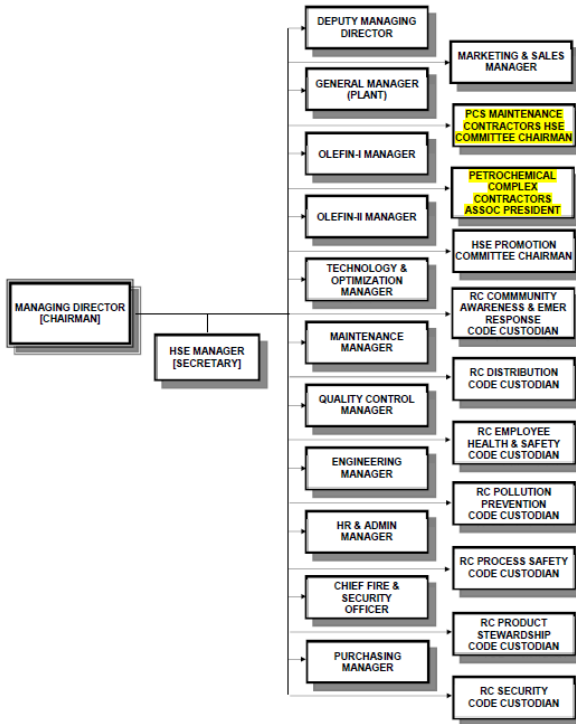


3. Partnership with Contractors

PCS Responsible Care Committee



RESPONSIBLE CARE® COMMITTEE



PCC - PCS Maintenance Contractors HSE Committee

- PCS HSE and Maintenance Managers are Advisors

PCCA - Petrochemical Complex Contractors Association

- Formed on 30 Oct 2001
- By PCS in-house/resident contractors
- A society registered with the Registry of Societies

2Q 2004 - PCC and PCCA join PCS RC Committee

- PCC set yearly action plan to meet PCS RC objectives

3. Partnership with Contractors



PCCA
conducts
training for its
members



3. Partnership with Contractors



PCCA joins
PCS members
in external
events &
training



COMPETENCY DEVELOPMENT:
Global Summit on Process Safety



SOCIAL:
PCS Bowling Tournament



VISIBILITY:
National WSH Events



RECOGNITION:
SCIC RC Award

strong partnership is a key enabler for
the success of PCS HSE programmes
and good HSE performance

4. Contractor Evaluation & Selection



Objectives:

1. A pool of Approved Contractors are available for work in PCS
 2. They have been evaluated and pre-qualified
 3. Criterion includes HSE, capabilities, efficiency, past performance, etc
- ✓ Contractor Evaluation Panel comprise of members from Purchasing, HSE and Maintenance/User
 - ✓ Periodic evaluation frequency – not more than 3 years, based on score during evaluation



4. Contractor Evaluation & Selection



Some highlights:

1. Approved Contractors (“AC”) to be registered as bizSAFE Level 3 or higher
 - Currently all AC are “Level Star” or “Partner”
 - PCS thank our contractor partners for working together to promote and continually achieve higher levels of bizSAFE over the years
2. Evaluation includes quantitative scores for the various aspects of WSH e.g. Management Systems, HSE performance/track record both in and outside of PCS



4. Contractor Evaluation & Selection



3. Evaluation of Approved Contractor Status

- Periodic evaluation - Interval of not more than three years, depends on score during evaluations
- Ad-hoc review - Deficiency in work, HSE incident, Changes in AC organization, etc
- AC WSH performance outside PCS - Review of the AC HSE incidents outside PCS

4. PCS has various HSE programmes for employees and contractors including the right to stop unsafe work ...



5. PCS HSE Programmes



PCS HSE programmes for employees and contractors



STAR - STop-And-Report

- ✓ Intervention programme to stop unsafe conditions or acts



BBSO - Behaviour Based Safety Observation

- ✓ Peer-to-peer safety observation to encourage safe work practices
- ✓ No-name No-Blame



5. PCS HSE Programmes



SOS - Speak Out for Safety

- ✓ Empowering workers to speak out about safety topics



NMR - Near Miss Report

- ✓ Learning lessons to prevent similar incidents

The Heinrich 300-29-1 Model



5. PCS HSE Programmes



PEPS - PCS Employee Participation Scheme



Make our ideas work

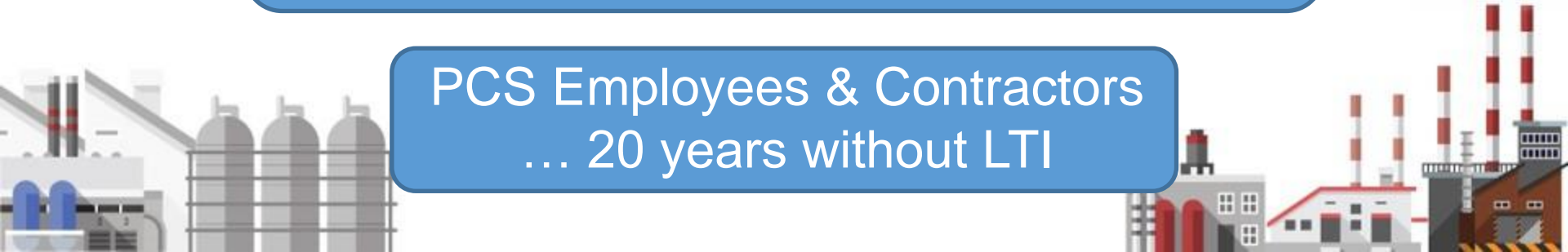


✓ **GSS** - Group Suggestion Scheme

✓ **FIND** - observation of fine details

PCS strong partnership with our contractors and the successful HSE programmes have contributed to our good HSE performance

PCS Employees & Contractors
... 20 years without LTI



6. Outreach



- sharing of WSH knowledge / experience

As part of PCS Responsible Care, outreach has been carried out regularly for our supply chain to share, discuss and improve WSH performance

- ✓ Customers
- ✓ Suppliers
- ✓ Service Providers
- ✓ Industry and others



6. Outreach

- sharing of WSH knowledge / experience



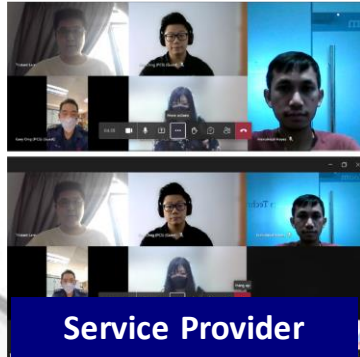
Customer



Customer



Service Provider



Service Provider



SCIC



SIA Engineering



THANK YOU



Reproduction of any material whether by photocopying or storing in any medium by electronic means or otherwise is prohibited without prior written consent of PCS PTE. LTD.

