

Schindler Lifts (Singapore) Pte Ltd

Building Safety With Our Business Partners

Michael Li
Managing Director
8th December 2022

© Schindler 2022

| © Schindler 2022 | We Elevate | December 8, 2022 |



Agenda

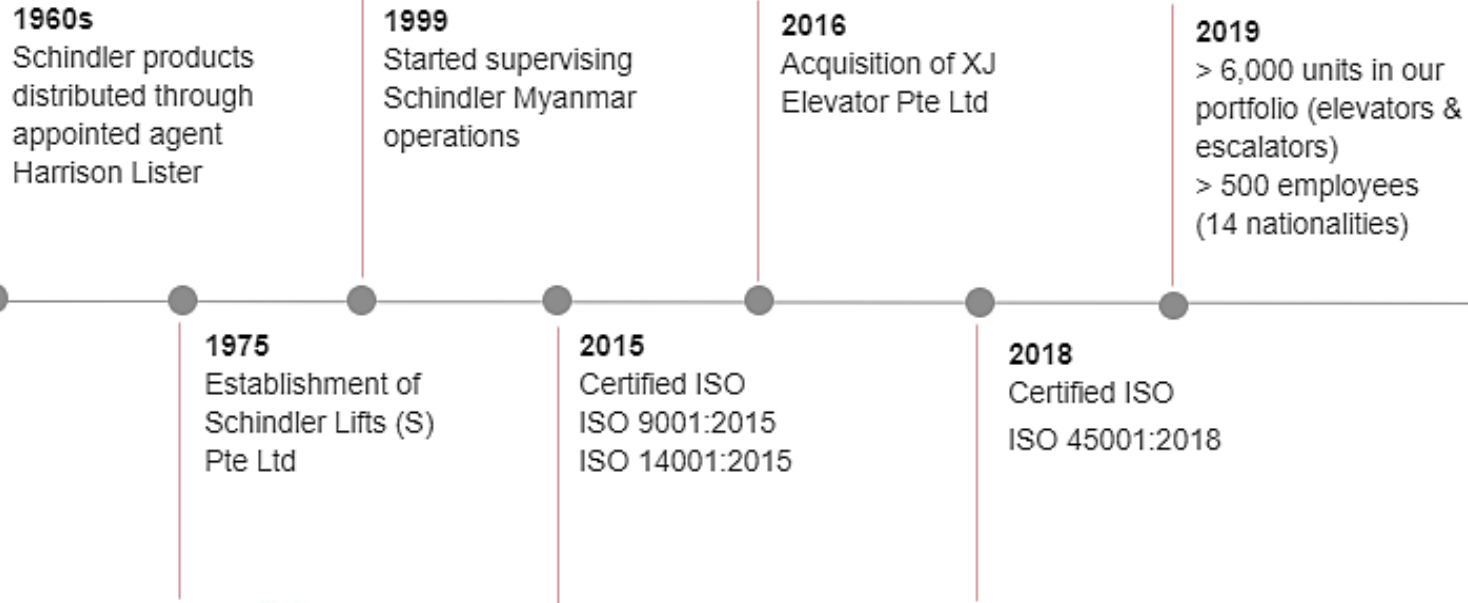
1. Introduction
2. Our Nurturing Efforts
3. Strengthen Workplace Safety & Health
4. Summary

01

Introduction

We are..... Schindler Singapore

Our History



bizSAFE Star & bizSAFE Partner

Certified by the Workplace Safety and Health Council on bizSAFE Level Star



Introduction

Why Embark on bizSAFE Partner

- We became bizSAFE Partner to work with our stakeholders in reducing incident rates
- To create a strong synergy between Our Business Partners and Schindler Lifts (Singapore)
 - ❖ *Feedback & Feedforward.....*
 - ❖ *Aligned Safety Practices with our partners.....*
 - ❖ *Making each day better and safer.....*
- To improve the safety performance of partners working on behalf of the company while also improving general operational efficiency
- To create a versatile safety partnership with a common goal of preventing accidents

*Partners Through
Thick & Thin*

02

Our Nurturing Efforts

Nurturing Efforts

Trainings



NO GO Safety Training.....

List Life Saving Rules

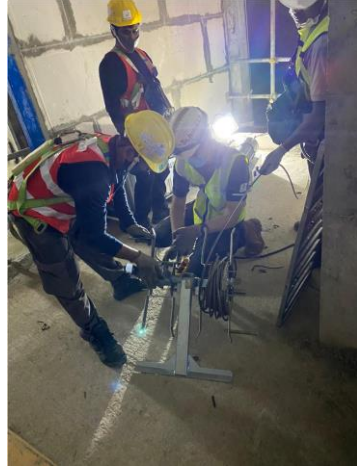
- ✓ *Fall Protection*
- ✓ *Safe Hoistway Access*
- ✓ *Hoisting & Rigging*
- ✓ *Lock Out Tag Out*
- ✓ *Jumper*
- ✓ *Safety Certified Subcontractors*

NO GO Safety Training.....

- Training conducted to our subcontractors / suppliers
- Adopting the right procedure for each rule
- Once yearly training with refresher

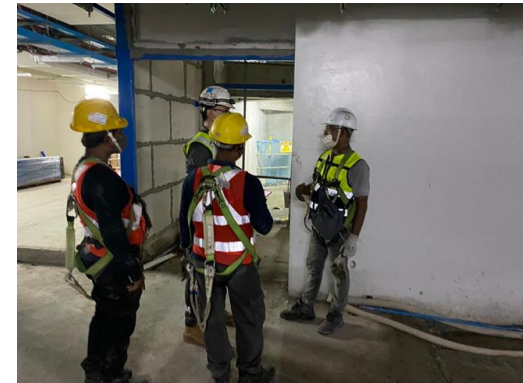
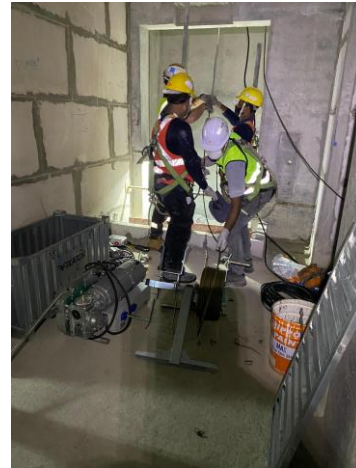
Nurturing Efforts

Trainings



Product Training

- Trained by our installation & product master trainers
- Ensuring a safe installation of elevators and escalators



Nurturing Efforts

Subcontractor Safety Partnership

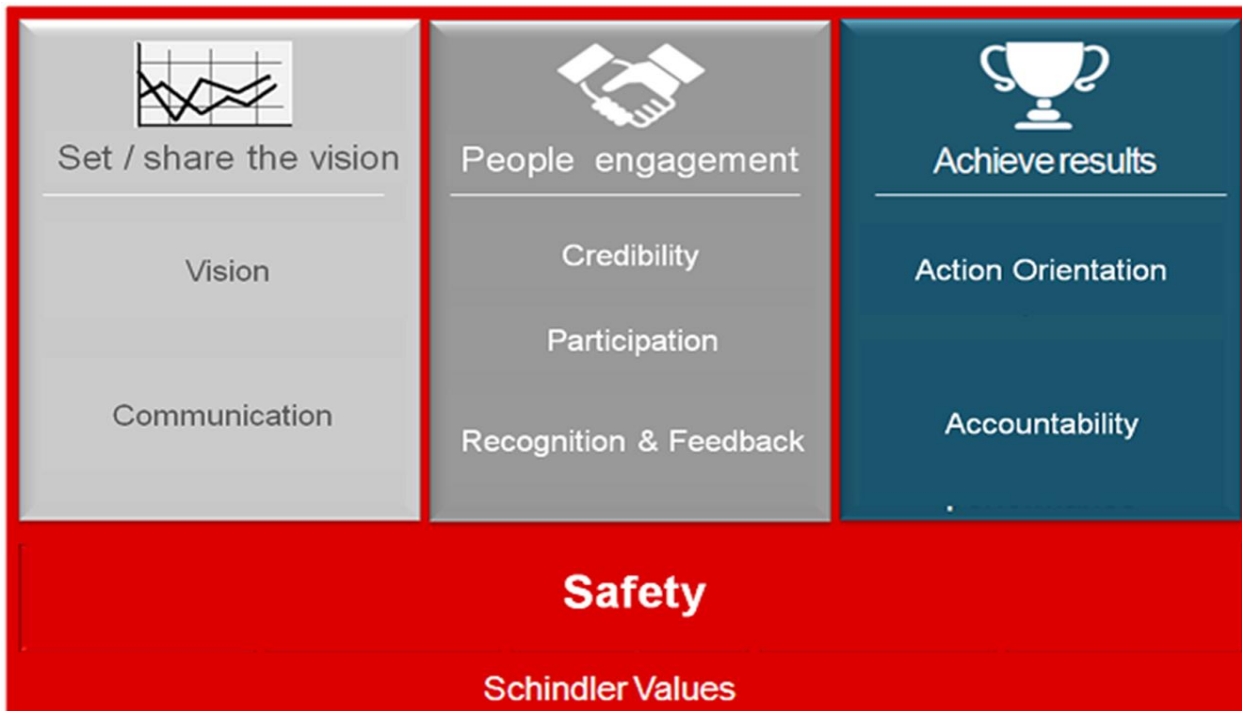


- Senior leader demonstrated safety behaviour
- Employees follow behaviour modelled by senior leadership
- Responsible leaders emphasize the importance of safety values within the workplace

Nurturing Efforts

Subcontractor Safety Partnership

7 Schindler Values of Safety Leadership...



Vision..

Believe all injuries are preventable through highest safety standards

Communication...

Listen actively with respect on safety concerns

Credibility...

Do what we say and always be a role model

Participation...

Encourage people to give their ideas to improve safety

Recognition & Feedback...

Timely recognitions and feedbacks

Action Orientation...

Trained & Re-enforce and ensure safety compliance

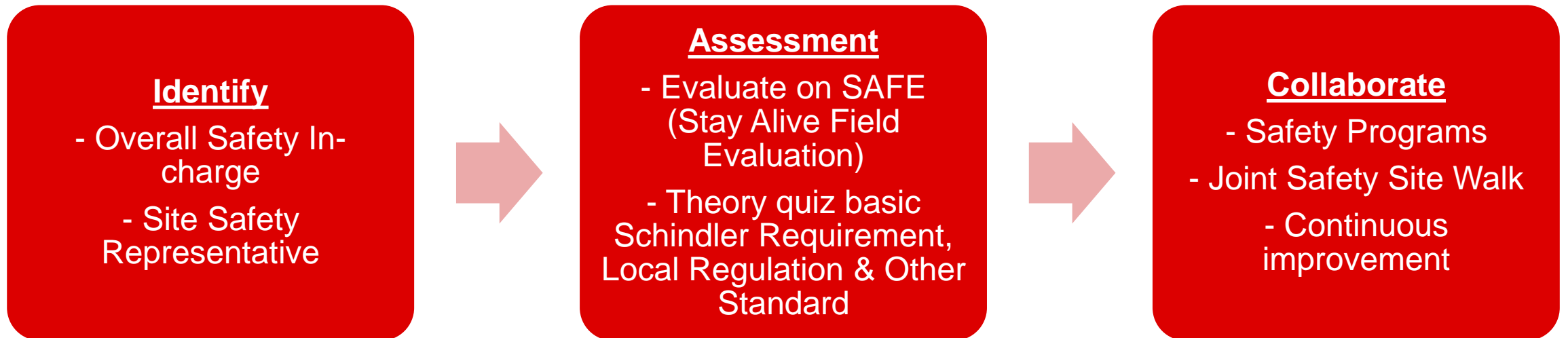
Accountability...

We hold ourselves and people accountable for our safety performance

Nurturing Efforts

Subcontractor Safety Representative

- Sub-contractor Overall Safety In-charge & Safety Site representative **I.A.C** program
 - ❖ PASSED the *SAFE (Stay Alive Field Evaluation)* and understanding of basic Local Regulations & other standards
 - ❖ Creates a better partnership in Safety & Health related matters
 - ❖ Keeping up with any updates, requirements, etc



Nurturing Efforts

Safety Subcontractor Workshop



- Safety Workshop for Subcontractors
- Discussing issues and how to improve

03

Strengthen Workplace Safety & Health

Strengthen Workplace Safety & Health

Safety Blitz



- Safety Blitz is a site visits by Schindler Management team
- Observing safety behavior on work site
- Create a positive reinforcement



Strengthen Workplace Safety & Health Behaviour Lab

- Behaviour Lab involve our subcontractor / suppliers
- Sharing of Hazard and possible scenario
- What are the measures to be taken in preventing accident/incident
- Behaviour Lab is conducted by Frontline Managers or above



Car Top


Floor holes:

What does a worst-case scenario look like here?

Problem description

Floor holes in Machine room

Falling objects in the hoistway



Protect floor openings with metallic grids or prefabricated guards.

POSSIBLE CAUSES

Modernization activities involve replacing and removing components of elevators in the machine room that create openings and holes in the floor just above the hoistway, which are not properly covered or guarded.

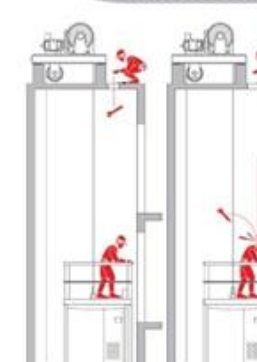
POTENTIAL CONSEQUENCES

Risk of injuries or death by falling objects.

HOW TO AVOID

Properly cover and guard all openings / holes on machine room floor using metallic grids, plates or prefabricated guards.

Worst case scenario



Falling objects

Wrench falls from machine room in the hoistway through floor hole where another worker is working and not using helmet. Severe injuries or death result.

Strengthen Workplace Safety & Health

Subcontractor Safety Campaign



- To promote Safety and Health
- Influence other workers to improve their safety performance
- To inculcate safety behaviours and practices
- Safety Recognitions

04

Summary

Summary

Building Safety With Our Business Partners



Safety leadership

- Promoting Safety Leadership to our partners
- Building safety into daily conversation by Safety Leaders
- 'I OWN SAFETY'

Subcontractor Safety Management

- Subcon Safety Partnership
- Subcon Safety Representative (I.A.C)
- Subcon Safety Workshop

Creating awareness & staying vigilant

- Life saving Rules; NO GO Safety
- Safety Blitz
- Behavior Lab



We Elevate... Safety

Copyright © Schindler. All rights reserved

Schindler owns and retains all copyrights and other intellectual property rights in this presentation. It may not be reproduced, modified or copied nor used for any commercial purposes (e.g. manufacturing), nor communicated to any third parties without our written consent.

Schindler undertakes all reasonable efforts to ensure that the information in this presentation is accurate, complete and derives from reliable sources. Schindler however, does not represent nor warrant (either expressly or implicitly) accuracy, reliability, timeliness or completeness of such information. Therefore, Schindler is not liable for any errors, consequence of acts or omissions based on the entirety or part of the information available in this presentation.



Schindler