



Above and Beyond Hazards and Risks when Working at Height

Mr. Povaneswaran Mariappan

(Head of Dept - Hull, Painting, Staging & Cleaning)

Gul Yard – ST Engineering Marine Ltd



Contents

1. Singapore – Fall from Height Statistics

2. Global Picture – Fall from Height Statistics

3. Leadership Approach – Commitment to WAH Safety

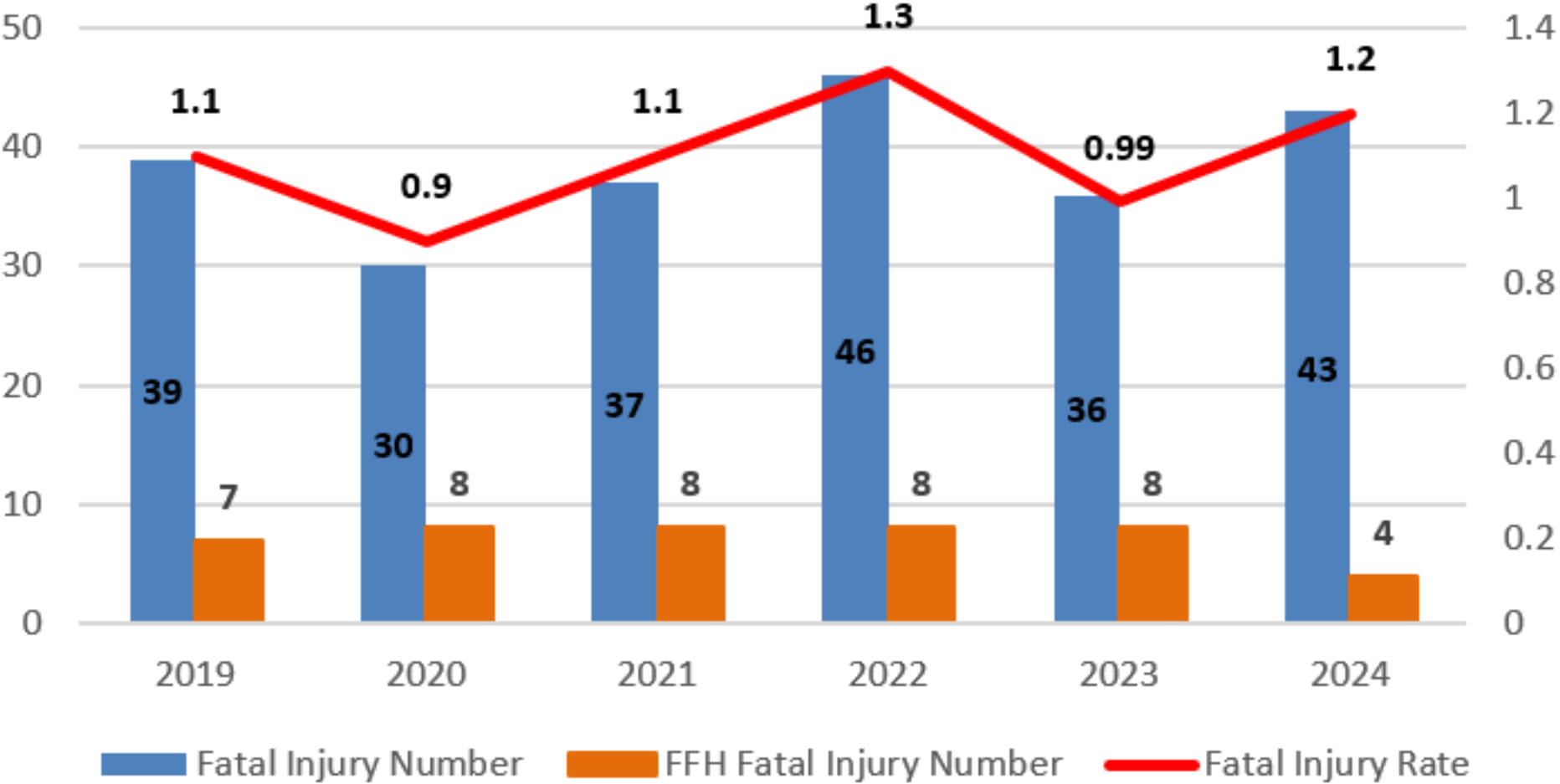
4. Embedding Safety into Culture

5. Challenges and Lessons Learned

6. Cross Industry Applicability

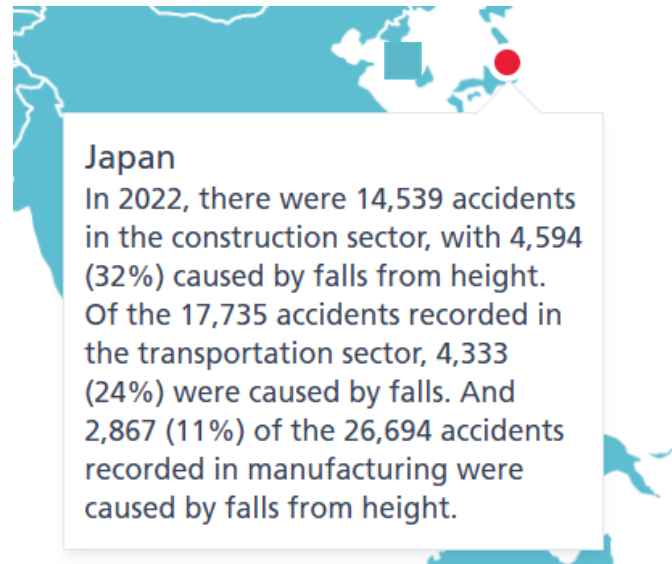
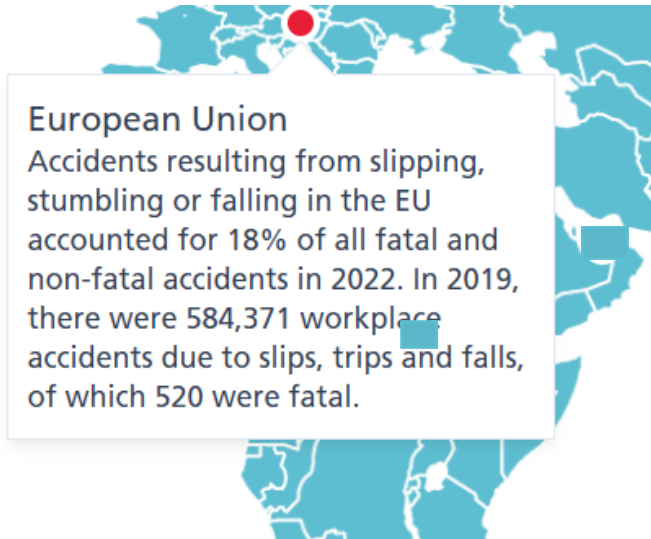
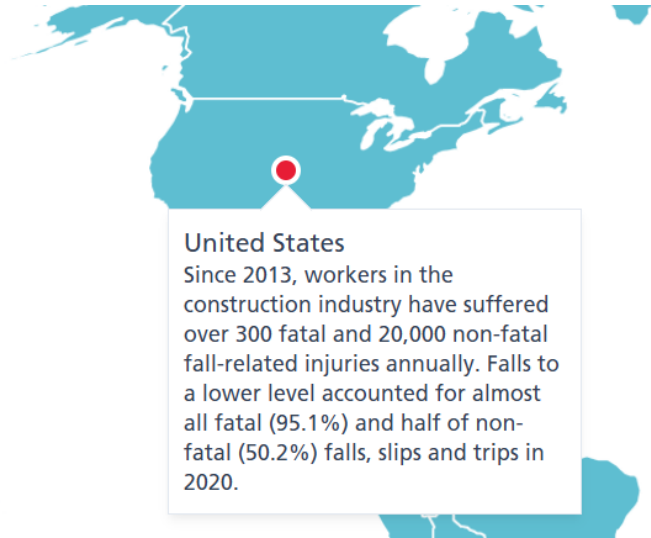
Singapore – Fall from Height Statistics

Workplace Fatal Injuries 2019 - 2024



Source: MOM – Statistical trend on work at height 2024

Global – Fall from Height Statistics



FOUR KEY THRUSTS



THRUST 1: **Leadership Approach**

Identifying risk and setting
clear expectations



THRUST 2: **Embedding safety into culture**

Make safety a core value
and empower everyone



THRUST 3: **Challenges and lessons learnt**

Workforce resistance and
inconsistent practices



THRUST 4: **Cross Industry Applicability**

Hierarchy of controls

Leadership Approach



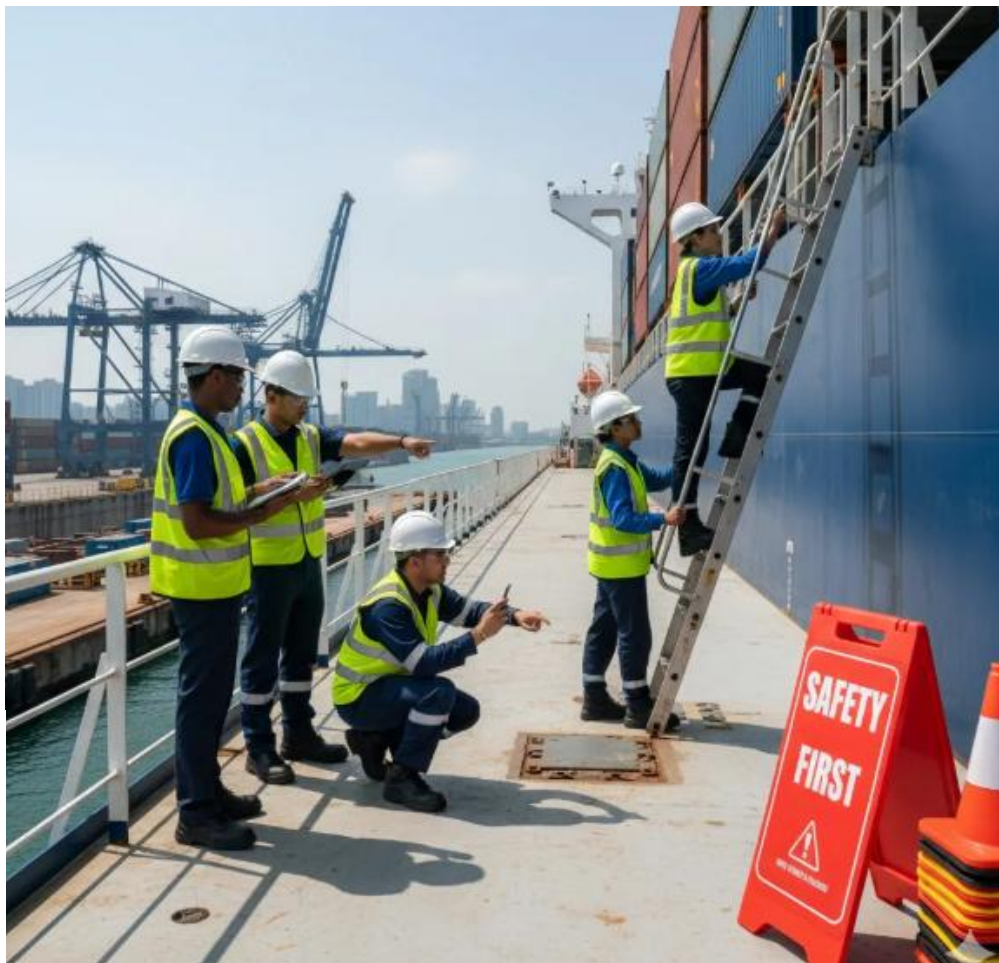
THRUST 1: Leadership Approach

A. Identification of Risk

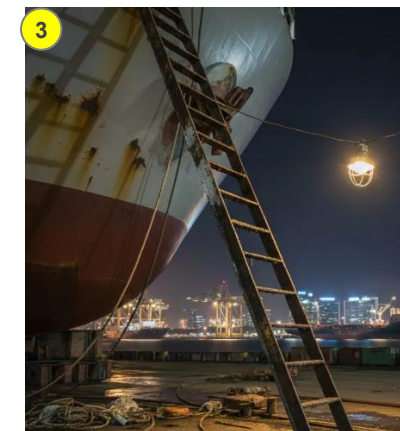
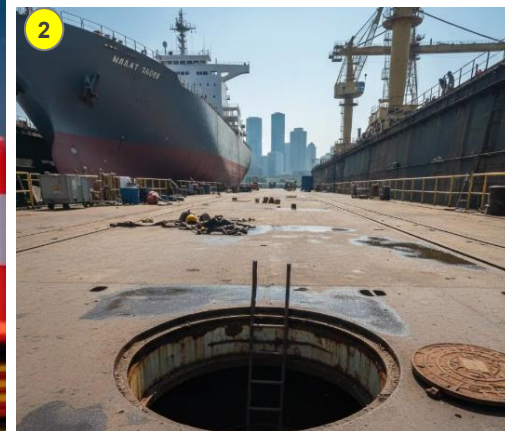
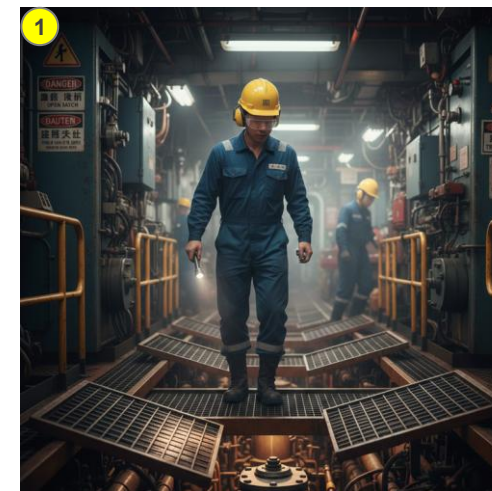
B. Set Clear Expectations

C. Allocate adequate resources

D. Lead by Examples



Conduct on arrival Inspection to identify Inherent hazards.



**1. Missing floor plates 2. Unguarded manholes
3. Damaged ladders.**

Leadership Approach



THRUST 1: Leadership Approach

A. Identification of Risk

B. Set Clear Expectations

C. Allocate adequate resources

D. Lead by Examples



Ask the frontline workers about the challenges faced and act accordingly.



Appreciate safe work behaviors.

Leadership Approach



THRUST 1: Leadership Approach

A. Identification of Risk

B. Set Clear Expectations

C. Allocate adequate resources

D. Lead by Examples



Pre job evaluation check - KPI



Work at height Training - KPI



Review the KPI in monthly WSH Committee Meetings

Leadership Approach



THRUST 1: Leadership Approach

A. Identification of Risk

B. Set Clear Expectations

C. Allocate adequate resources

D. Lead by Examples



Ensure sufficient budget is catered to procure certified equipment's such as safety harness, lifelines, anchor points and maintenance programs



Lack of resources is one of the biggest cause of unsafe shortcuts

Leadership Approach



THRUST 1: Leadership Approach

A. Identification of Risk

B. Set Clear Expectations

C. Allocate adequate resources

D. Lead by Examples



Participate in toolbox talks



Eliminating WAH exposure by adopting engineering controls



Share best practices

Embedding Safety into Culture



THRUST 2: Embedding Safety into Culture

A. Make safety a core value

B. Behavioural based safety

C. Empowerment at all levels

D. Consistent Communication

Mission Statements



Performance Reviews



HR Onboarding



Procurement Practices



Embedding Safety into Culture



THRUST 2: Embedding Safety into Culture

- A. Make safety a core value
- B. Behavioural based safety**
- C. Empowerment at all levels
- D. Consistent Communication



Use positive reinforcements



Observe tasks and provide feedback based on behaviours

Embedding Safety into Culture



THRUST 2: Embedding Safety into Culture

- A. Make safety a core value
- B. Behavioural based safety
- C. Empowerment at all levels**
- D. Consistent communication



Train supervisors to respond in a constructive manner, if any work is stopped



Give workers the STOP WORK AUTHORITY, without fear of repercussions

Embedding Safety into Culture



THRUST 2: Embedding Safety into Culture

- A. Make safety a core value
- B. Behavioural based safety
- C. Empowerment at all levels
- D. Consistent communication**



Perform regular work at height campaigns, ladder inspection month, Line of fire awareness sessions



Focused tool box talks linked to actual site conditions

Embedding Safety into Culture



THRUST 3: Lessons Learnt

**A. Workforce
Resistance**

**B. Inconsistent
Practices**

**C. Lack of Risk
Perception**



Peer to Peer coaching



**Showcase real time incidents pertaining
to Work at Height**

Embedding Safety into Culture



THRUST 3: Lessons Learnt

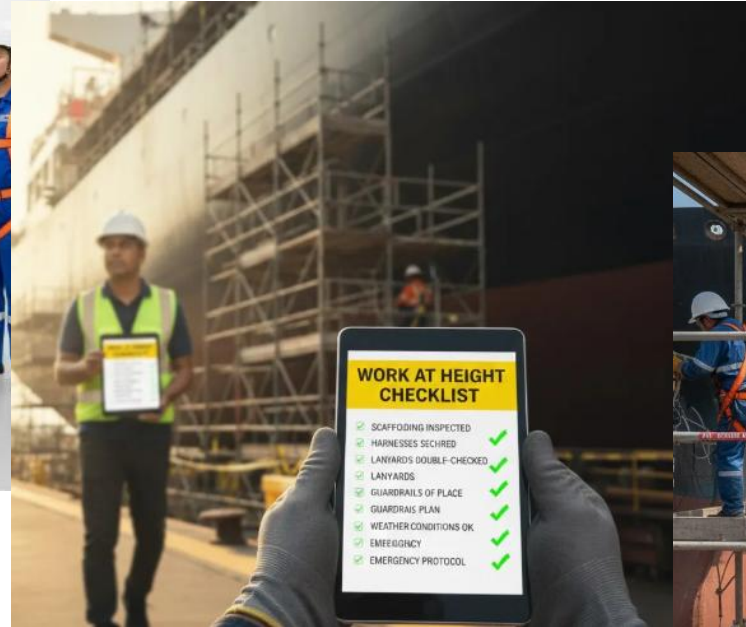
A. Workforce
Resistance

B. Inconsistent
Practices

C. Lack of Risk
Perception



Supervisor competency
programs



Standard checklists for
consistency



EHS Audits to ensure consistency on
Work at height

Embedding Safety into Culture



THRUST 3: Lessons Learnt

- A. Workforce Resistance
- B. Inconsistent Practices
- C. Lack of Risk Perception



Consequences of DROP Object Hazard



Fall arrest demonstration sessions

Embedding Safety into Culture



THRUST 4:
Cross Industry
Applicability

A. Hierarchy of Control



Substitute

Engg control
measures

Administrative
controls

PPE





TARGET

ZERO

FALLS