



Tripartite Alliance for  
Workplace Safety and Health

# WSH Award 2021 Briefing on CultureSAFE



15 January 2021

**Jason Yuen**

Funds & Programme Management,  
Planning and Development



# CultureSAFE

## What

- CultureSAFE is a programme that supports organisations in their WSH Culture-building journey.
- For more information on CultureSAFE, please visit <https://www.tal.sg/wshc/Programmes/CultureSAFE/>.

## Why

- CultureSAFE is one of the WSH Awards application requirement.

## Who

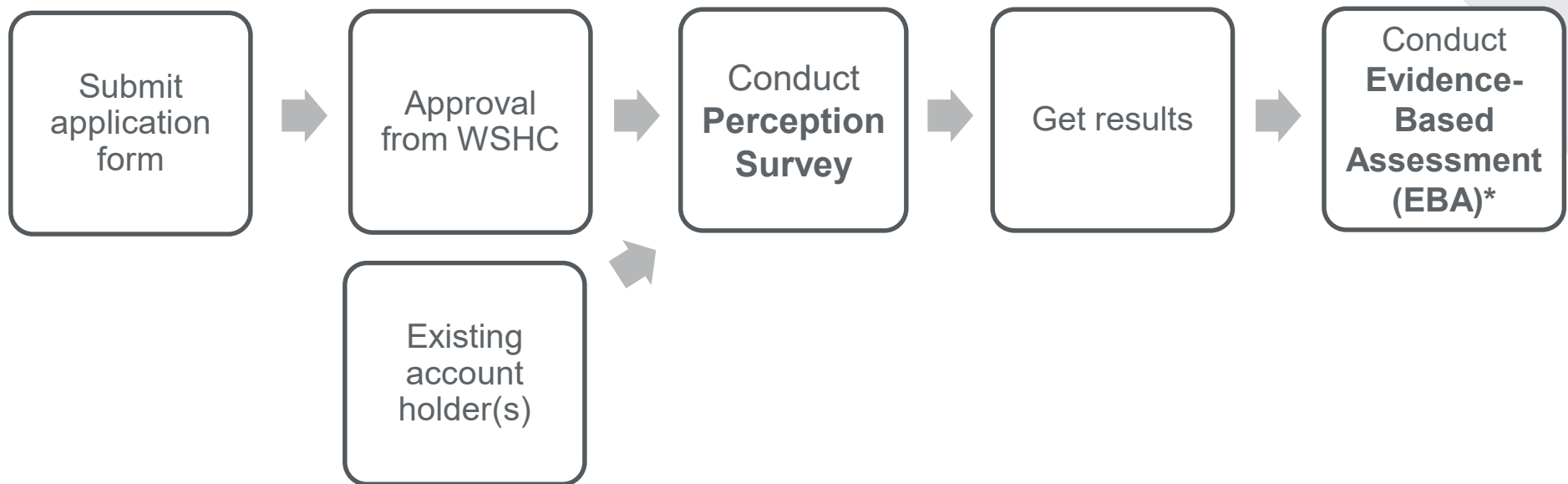
- WSH Developer Awards
- WSH Performance Awards (WSHPA)
- Safety and Health Award Recognition for Projects (SHARP)

## When

- Two weeks before application deadline, i.e. 24 March 2021

# CultureSAFE

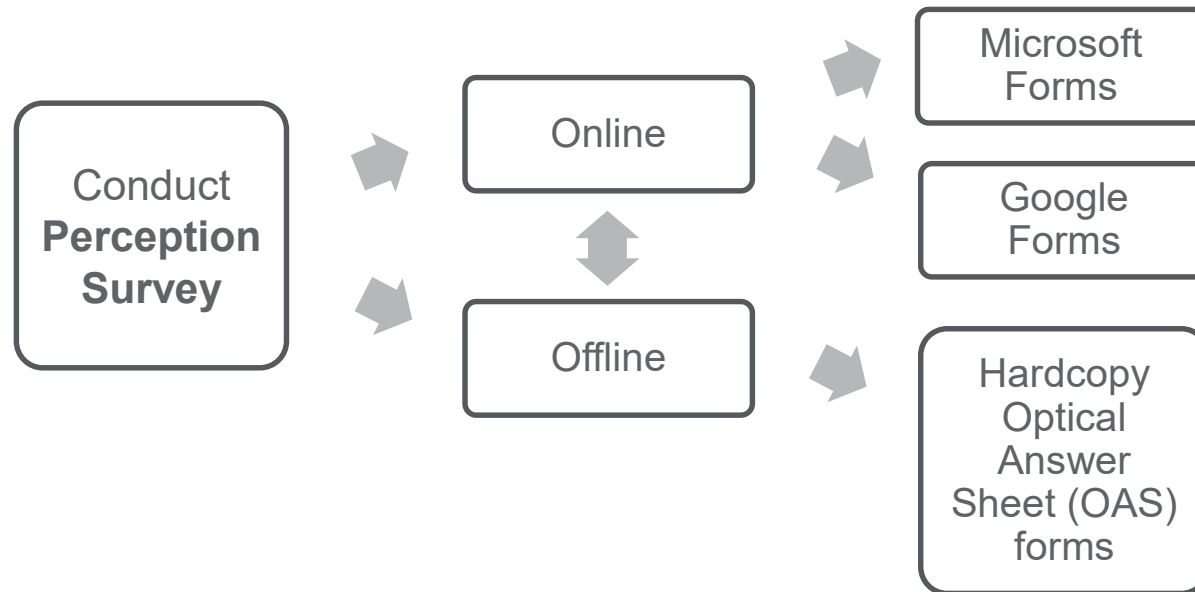
## Steps taken by a company



*\* For results to be valid for WSH Awards, the EBA must be conducted by a qualified auditor/ assessor.*

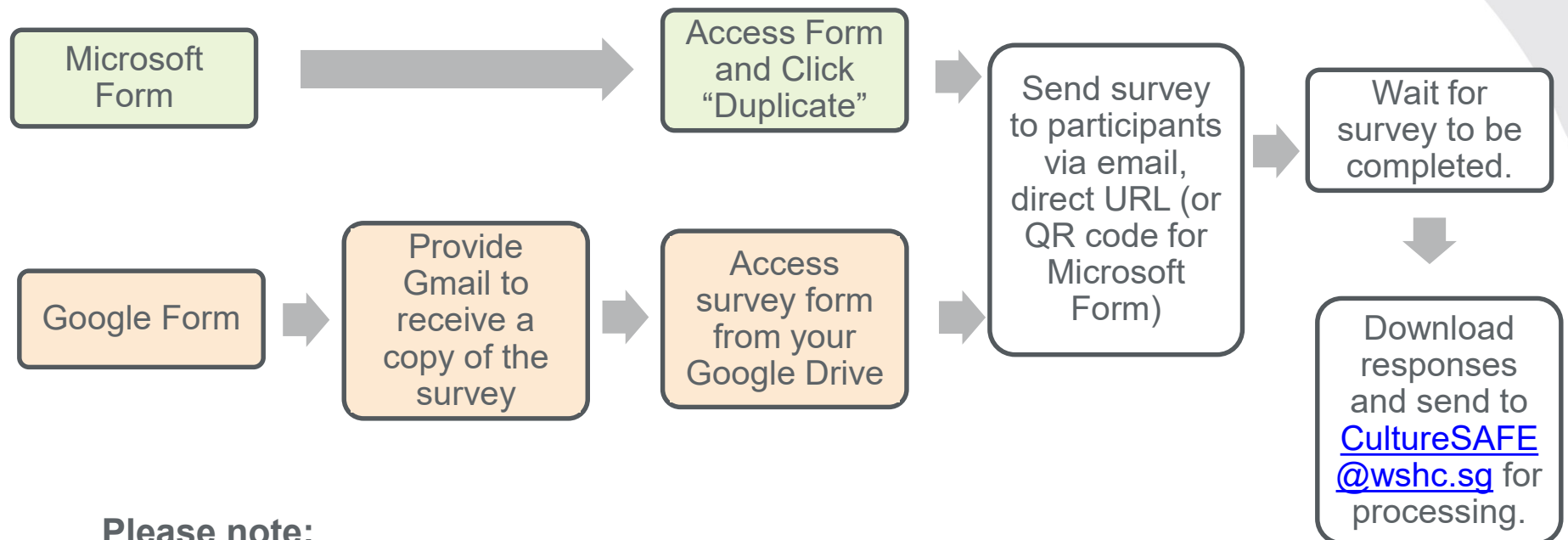
# CultureSAFE: Perception Based Survey

Survey can be done via



# CultureSAFE: Perception Based Survey

For **online** survey, if you are using:



## Please note:

- 1) Only English survey is available. Words/ Questions can be easily translated using Google Translate.
- 2) Participants will be able to answer the survey using any electronic devices (e.g. handphone)
- 3) Step-by-step guide can be made available upon request.

# CultureSAFE: Perception Based Survey

Microsoft Forms



[Managers](#)



[Supervisors](#)



[Workers](#)

# CultureSAFE: Perception Based Survey

For **hardcopy** survey, please:

- A. Print out the Optical Answer Sheet (OAS) forms yourself,
- B. Email to [CultureSAFE@wshc.sg](mailto:CultureSAFE@wshc.sg) for the OAS template  
*Please note: We have suspended the provision of hardcopy OAS forms temporarily.*

Questionnaires can be found under "Step 1 Diagnostic" at <https://www.tal.sg/wshc/Programmes/CultureSAFE/About-CultureSAFE>

Completed survey forms can be scanned and emailed to [culturesafe@wshc.sg](mailto:culturesafe@wshc.sg) for processing.

# Perception Based Survey – Sample Size

Sampling size table can be found below.

- Suggested **ratio** is 2:3:10
- If there are insufficient Management rep, compensate the number by supervisor / worker
- Applicants may choose do “more” e.g. 100% sampling.

Company Size	Manager	Supervisor	Worker	Total Sampling
	2	3	10	
50	6	8	30	44
75	8	13	42	63
100	11	16	53	80
150	14	22	72	108
200	18	26	88	132
250	20	31	101	152
300	22	34	113	169
400	26	39	131	196
500	29	43	145	217
600	31	47	156	234
700	33	50	165	248
800	35	52	173	260
1000	37	56	185	278
1200	39	58	194	291
1500	41	61	204	306



# Perception Based Survey – Things to note

## 1. Shade properly (darker)

- 73 (1) (2) (3)
- 74 (1) (2) (3)
- 75 (1) (2) (3)
- 76 (1) (2) (3)
- 77 (1) (2) (3)
- 78 (1) (2) (3)
- 79 (1) (2) (3)
- 80 (1) (2) (3)
- 81 (1) (2) (3)

WSHCOUNCIL CULTURESAFE

Survey on WSH Culture for "Workers"

1. Agree (1) Disagree (2) I Don't Know (3)

2. Shade completely (1) (2) (3)

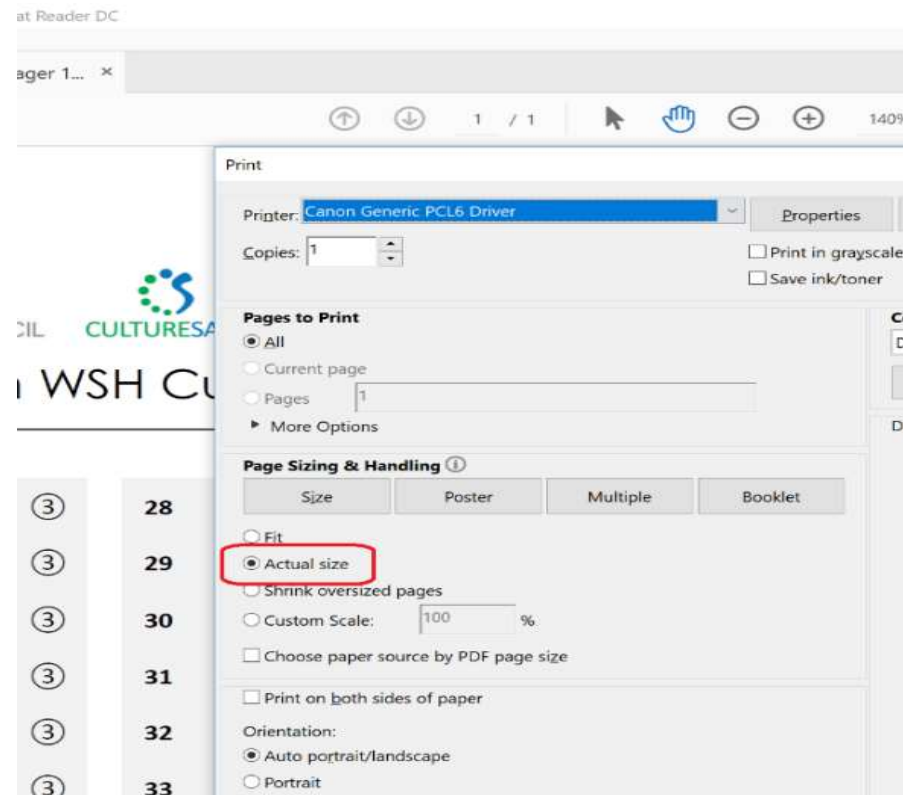
3. Cross to cancel (1) (2) (3)

1	(1) (2) (3)	28	(1) (2) (3)	55	(1) (2) (3)	82	(1) (2) (3)	109	(1) (2) (3)
2	(1) (2) (3)	29	(1) (2) (3)	56	(1) (2) (3)	83	(1) (2) (3)	110	(1) (2) (3)
3	(1) (2) (3)	30	(1) (2) (3)	57	(1) (2) (3)	84	(1) (2) (3)	111	(1) (2) (3)
4	(1) (2) (3)	31	(1) (2) (3)	58	(1) (2) (3)	85	(1) (2) (3)	112	(1) (2) (3)
5	(1) (2) (3)	32	(1) (2) (3)	59	(1) (2) (3)	86	(1) (2) (3)		
6	(1) (2) (3)	33	(1) (2) (3)	60	(1) (2) (3)	87	(1) (2) (3)		
7	(1) (2) (3)	34	(1) (2) (3)	61	(1) (2) (3)	88	(1) (2) (3)		
8	(1) (2) (3)	35	(1) (2) (3)	62	(1) (2) (3)	89	(1) (2) (3)		
9	(1) (2) (3)	36	(1) (2) (3)	63	(1) (2) (3)	90	(1) (2) (3)		
10	(1) (2) (3)	37	(1) (2) (3)	64	(1) (2) (3)	91	(1) (2) (3)		
11	(1) (2) (3)	38	(1) (2) (3)	65	(1) (2) (3)	92	(1) (2) (3)		
12	(1) (2) (3)	39	(1) (2) (3)	66	(1) (2) (3)	93	(1) (2) (3)		
13	(1) (2) (3)	40	(1) (2) (3)	67	(1) (2) (3)	94	(1) (2) (3)		
14	(1) (2) (3)	41	(1) (2) (3)	68	(1) (2) (3)	95	(1) (2) (3)		
15	(1) (2) (3)	42	(1) (2) (3)	69	(1) (2) (3)	96	(1) (2) (3)		
16	(1) (2) (3)	43	(1) (2) (3)	70	(1) (2) (3)	97	(1) (2) (3)		
17	(1) (2) (3)	44	(1) (2) (3)	71	(1) (2) (3)	98	(1) (2) (3)		
18	(1) (2) (3)	45	(1) (2) (3)	72	(1) (2) (3)	99	(1) (2) (3)		
19	(1) (2) (3)	46	(1) (2) (3)	73	(1) (2) (3)	100	(1) (2) (3)		
20	(1) (2) (3)	47	(1) (2) (3)	74	(1) (2) (3)	101	(1) (2) (3)		
21	(1) (2) (3)	48	(1) (2) (3)	75	(1) (2) (3)	102	(1) (2) (3)		
22	(1) (2) (3)	49	(1) (2) (3)	76	(1) (2) (3)	103	(1) (2) (3)		
23	(1) (2) (3)	50	(1) (2) (3)	77	(1) (2) (3)	104	(1) (2) (3)		
24	(1) (2) (3)	51	(1) (2) (3)	78	(1) (2) (3)	105	(1) (2) (3)		
25	(1) (2) (3)	52	(1) (2) (3)	79	(1) (2) (3)	106	(1) (2) (3)		
26	(1) (2) (3)	53	(1) (2) (3)	80	(1) (2) (3)	107	(1) (2) (3)		
27	(1) (2) (3)	54	(1) (2) (3)	81	(1) (2) (3)	108	(1) (2) (3)		

# Perception Based Survey – Things to note

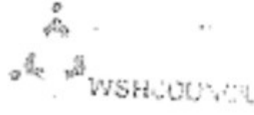

## 2. Print the OAS forms as its actual size

*Do not print one copy and photocopy the remaining as it will cause the paper margin to be off.*



# Perception Based Survey – Things to note

## 3. Scan the forms properly

### Survey on WSH Culture for "Managers"

1.	Agree ①	Disagree ②	I Don't Know ③
2.	Shade completely		● ② ③
3.	Cross to cancel		✕ ● ③

1	①	②	③	28	①	②	③	55	①	②	③	82	①	②	③	109	①	②	③
2	①	②	③	29	①	②	③	56	①	②	③	83	①	②	③	110	①	②	③
3	①	②	③	30	①	②	③	57	①	②	③	84	①	②	③	111	①	②	③
4	①	②	③	31	①	②	③	58	①	②	③	85	①	②	③	112	①	②	③
5	①	②	③	32	①	②	③	59	①	②	③	86	①	②	③	113	①	②	③
6	①	②	③	33	①	②	③	60	①	②	③	87	①	②	③	114	①	②	③
7	①	②	③	34	①	②	③	61	①	②	③	88	①	②	③				

# Perception Based Survey – Results

You will receive an email from us once the result is available.

The report will consists of the following:

- Date of report
- Company name (and site name, if applicable)
- Submitted by
- Number of survey participants
- Overall CultureSAFE Index Score
- Respective attributes scores
- Number of positive responses/ question/ group
- Organisation – Attribute Profile
- Job Level Comparison by Dimension (Organisation)
- Job Level Comparison by Dimension (Job Specific)

# Perception Based Survey – Results

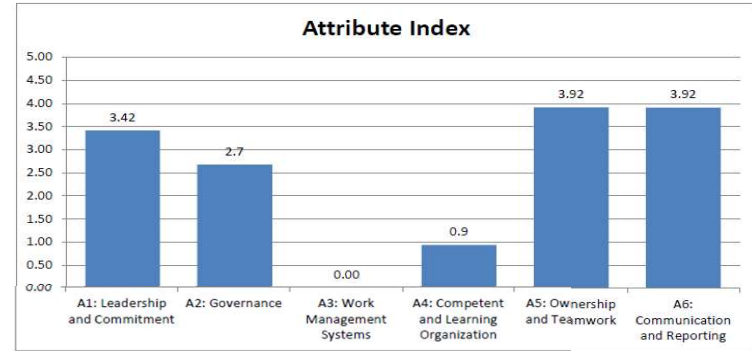
Date	4 Jan 2021
Company Name	TESTING 123 PTE LTD
Site Name (If any)	
Submitted By	Jason Yuen
Internal Reference	CSP-0000 - 1234

### CultureSAFE Results

Overall Index	2.5
A1: Leadership & Commitment	3.4
A2: Governance	2.7
A3: Work Management Systems	0.0
A4: Competent & Learning Organisation	0.9
A5: Ownership & Teamwork	3.9
A6: Communication & Reporting	3.9

### Total Number of Participants

Managers	14
Supervisors	22
Workers	74
Total	110



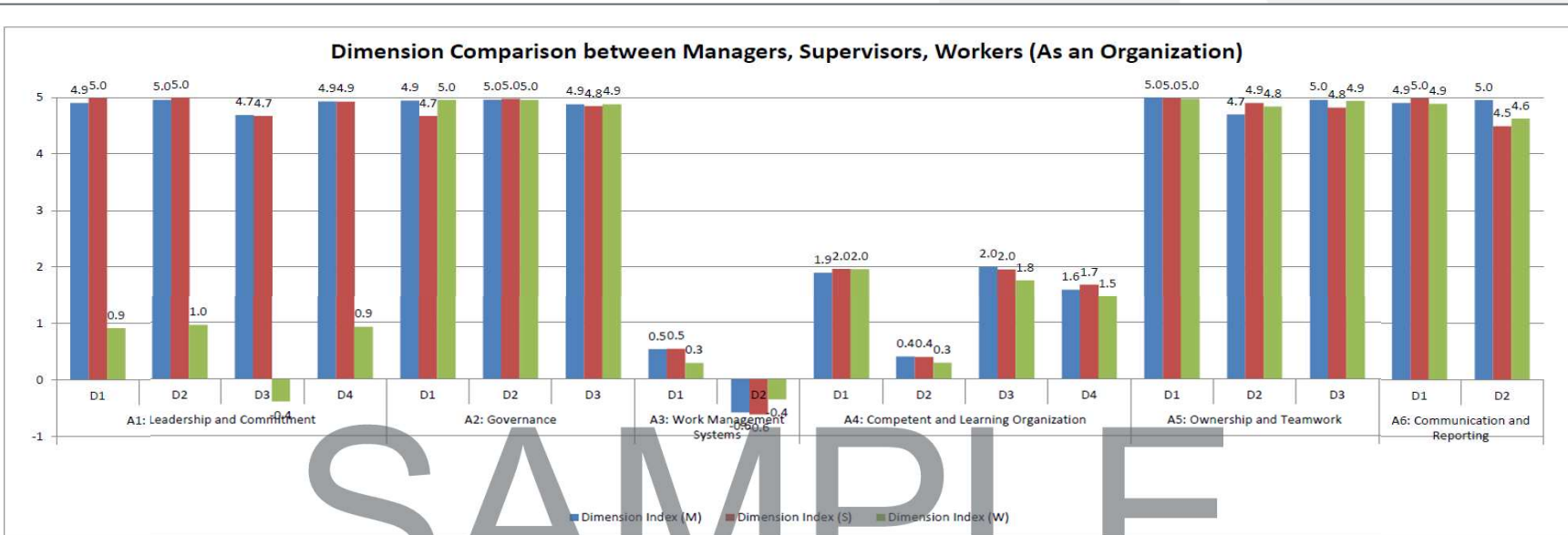
Question	Managers	Supervisors	Workers
1	14	22	74
2	14	22	74
3	14	22	33
4	14	22	74
5	14	22	73
6	14	22	73
7	14	22	73
8	14	22	73
9	14	22	72
10	14	22	74
11	14	22	74
12	14	21	74
13	14	18	32
14	14	21	29
15	14	20	73
16	0	21	0
17	14	21	74
18	14	22	69
19	10	21	74
20	14	22	73
21	14	22	74
22	14	22	74
23	14	21	74
24	14	22	74
25	14	0	1
26	13	21	73
27	14	19	1
28	14	22	73
29	0	22	74
30	13	22	60
31	13	21	74
32	14	21	74
33	13	22	63
34	13	22	64

Question	Managers	Supervisors	Workers
35	13	22	60
36	13	22	60
37	14	21	74
38	14	4	70
39	13	22	68
40	13	22	68
41	14	22	4
42	14	22	63
43	12	5	61
44	14	22	68
45	14	22	74
46	14	18	70
47	14	18	74
48	14	22	70
49	14	22	59
50	14	22	3
51	13	22	65
52	14	1	42
53	14	22	49
54	13	22	65
55	14	22	70
56	14	22	66
57	14	22	69
58	14	21	69
59	14	21	73
60	14	21	63
61	14	22	69
62	13	22	5
63	0	21	67
64	14	17	74
65	14	21	70
66	14	22	73
67	14	22	44
68	14	4	68

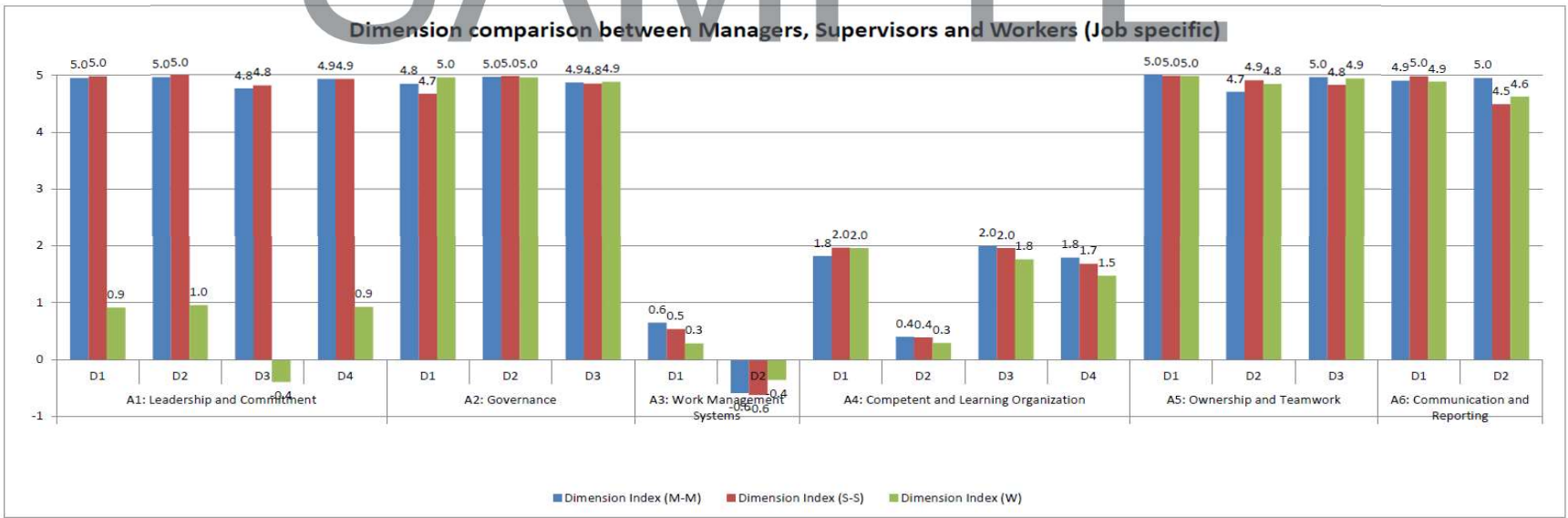
Question	Managers	Supervisors	Workers
69	14	9	59
70	14	10	64
71	14	21	0
72	14	22	74
73	14	22	67
74	14	22	74
75	14	0	72
76	0	22	69
77	14	22	69
78	14	22	70
79	14	22	73
80	14	22	74
81	14	22	74
82	14	21	74
83	14	17	73
84	14	21	74
85	14	22	69
86	14	22	74
87	13	21	74
88	14	22	72
89	14	22	73
90	12	22	34
91	14	21	74
92	0	7	72
93	14	22	73
94	14	15	73
95	14	22	74
96	14	15	71
97	14	21	0
98	14	22	74
99	14	15	74
100	13	7	73
101	13	22	32
102	14	0	74

Question	Managers	Supervisors	Workers
103	14	22	74
104	14	22	71
105	14	21	0
106	14	15	73
107	14	19	74
108	14	21	30
109	0	18	74
110	14	15	73
111	14	18	74
112	14	22	74
113	1	20	
114	13	22	
115	14	22	
116	14	22	
117	13	22	
118	14	22	
119	14		
120	14		
121	14		
122	14		
123	14		
124	13		
125	14		
126	14		
127	13		
128	14		
129	13		
130	10		
131	13		
132	10		
133	0		
134	10		
135	14		

# Perception Based Survey – Results



SAMPLE



# Thank you

