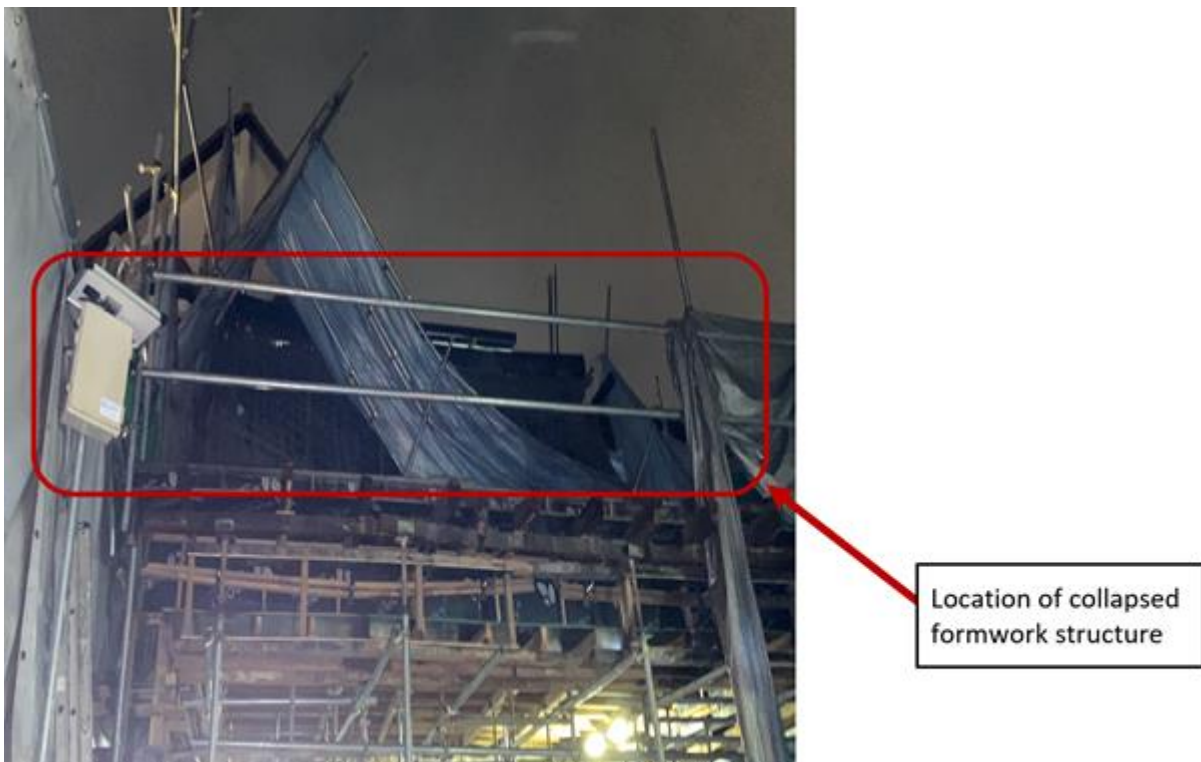


17 September 2021, Ref: 2122039

## **Dangerous Occurrence: Two workers injured in formwork collapse**

On 4 September 2021, a group of workers was carrying out concreting work on the third floor of a private dwelling when the formwork structure they were on collapsed. Two workers fell together with the collapsing structure and were hospitalised.

The formwork was not designed by a Professional Engineer.



Scene of the dangerous occurrence.

## **Recommendations**

The above incident can be prevented with the following measures:

- Appoint a Professional Engineer (PE) to design and certify formwork structures where required.
- Do not start concreting works for PE-designed formwork structures until the formwork structure has been inspected and certified by the PE.
- Have a trained formwork supervisor (who passed the Workforce Skills Qualification

"Supervise Workplace Safety and Health for Formwork Construction" course) conduct frequent on-site inspections during formwork installation to confirm formwork structures are installed as per the approved design and drawings.

- Conduct a risk assessment for formwork activities.
- Brief workers (including subcontractors) on the risk controls before starting work.
- Ensure that workers are trained on the installation method, equipment used and safe work procedures for formwork structure installation. Minimally, check that each worker deployed for formwork activities has successfully passed the Workforce Skills Qualification "Perform Formwork Activities" course.

Refer to Part IX: Formwork Structures of WSH (Construction) Regulations 2007 and SS 580: 2020 Code of Practice for Formwork for legal requirements and best practices on formwork structures.

\* Information on the accident is based on preliminary investigations by the Ministry of Manpower as at 17 September 2021. This may be subject to change as investigations are still on-going. Please also note that the recommendations provided here are not exhaustive and they are meant to enhance workplace safety and health so that a recurrence may be prevented. The information and recommendations provided are not to be construed as implying liability on any party nor should it be taken to encapsulate all the responsibilities and obligations under the law.

---

We regret that we are unable to reply to emails at this email address. For enquiries or feedback, please email us at [contact@wshc.sg](mailto:contact@wshc.sg).

Visit the WSH Council's [website](#) now for updates on WSH-related matters, information and events.



---

This WSH Bulletin is available free of charge, may be printed or downloaded onto electronic, optical or similar storage media provided that such activities are for private research, study, or in-house use only. If such material is to be copied or reproduced, users are asked to ensure that the material is reproduced accurately and not in a misleading context, that the status of the material is identified and to acknowledge Workplace Safety & Health Council, Singapore as the source of the material.